

MKS3 antibody

Catalog Number: 112671

Product name

MKS3 antibody

Specificity

Human, Mouse; other species not tested.

Antibody description

MKS3 Rabbit Polyclonal antibody. Positive IF detected in hTERT-RPE1 cells. Positive IHC detected in human kidney tissue, human hepat°Cirrhosis tissue.

Preparation

This antibody was obtained by immunization of MKS3 recombinant protein (Accession Number: BC032835). Purification method: Antigen affinity purified.

Formulation

PBS with 0.02% sodium azide and 50% glycerol pH 7.3.

Storage

Store at -20°C. DO NOT ALIQUOT

Clonality

Polyclonal

Ig Type

Rabbit IgG

Applications

ELISA, IF, IHC

Dilutions

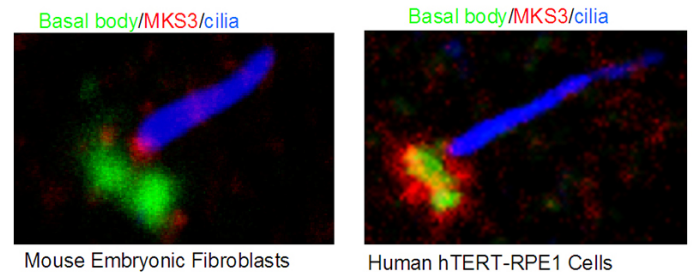
Recommended Dilution:

IHC: 1:20-1:200

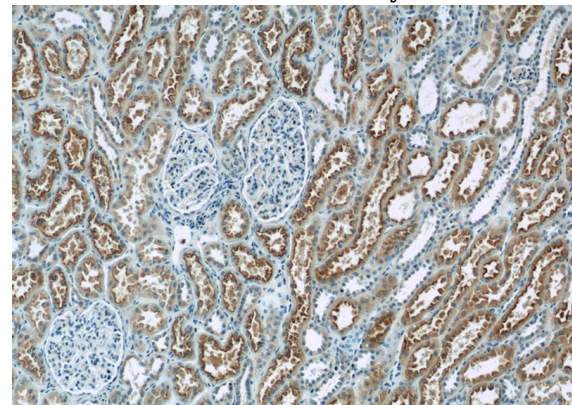
IF: 1:20-1:200

Validations

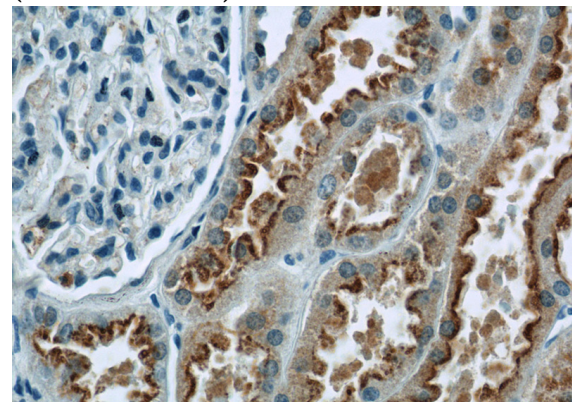
MKS3 marks the proximal transition zone and basal body



IF result from Dr. Corbit, Kevin. anti-MKS3(Catalog No:112671) marks the proximal transition zone and basal body of Human hTERT-RPE1 cells and Mouse embryonic fibroblasts.



Immunohistochemistry of paraffin-embedded human kidney tissue slide using Catalog No:112671(TMEM67 Antibody) at dilution of 1:50 (under 10x lens)



Immunohistochemistry of paraffin-embedded human kidney tissue slide using Catalog No:112671(TMEM67 Antibody) at dilution of 1:50 (under 40x lens)