

# ASS1 antibody



Catalog Number: 108271

## Product name

ASS1 antibody

## Specificity

Human, Mouse, Rat; other species not tested.

## Antibody description

ASS1 Rabbit Polyclonal antibody. Positive IHC detected in human testis tissue, human liver tissue, human placenta tissue. Positive WB detected in HEK-293 cells, HeLa cells, human kidney tissue, mouse kidney tissue, rat kidney tissue. Positive IP detected in HeLa cells. Observed molecular weight by Western-blot: 45 kDa

## Preparation

This antibody was obtained by immunization of ASS1 recombinant protein (Accession Number: NM\_054012). Purification method: Antigen affinity purified.

## Formulation

PBS with 0.02% sodium azide and 50% glycerol pH 7.3.

## Storage

Store at -20°C. DO NOT ALIQUOT

## Clonality

Polyclonal

## Ig Type

Rabbit IgG

## Applications

ELISA, WB, IHC, IP

## Dilutions

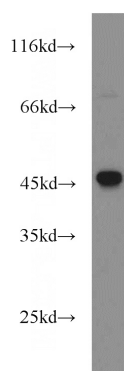
Recommended Dilution:

WB: 1:500-1:5000

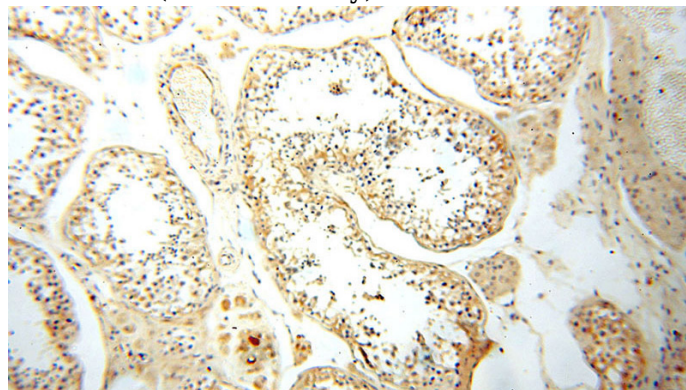
IP: 1:500-1:5000

IHC: 1:20-1:200

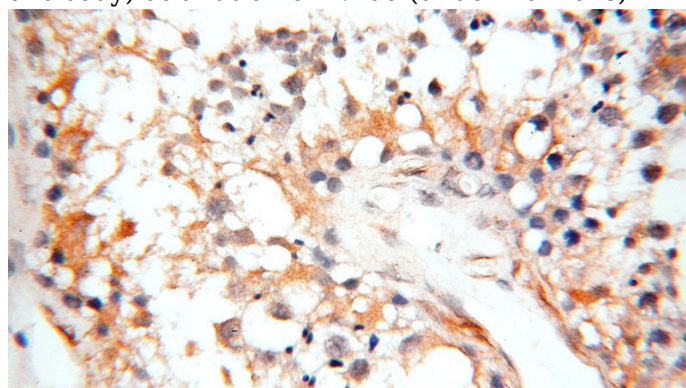
## Validations



HEK-293 cells were subjected to SDS PAGE followed by western blot with Catalog No:108271 (ASS1 antibody) at dilution of 1:500



Immunohistochemical of paraffin-embedded human testis using Catalog No:108271 (ASS1 antibody) at dilution of 1:100 (under 10x lens)



# ASS1 antibody

Catalog Number: 108271

Immunohistochemical of paraffin-embedded human testis using Catalog No:108271(ASS1 antibody) at dilution of 1:100 (under 40x lens)

IP Result of anti-ASS1 (IP:Catalog No:108271, 4ug; Detection:Catalog No:108271 1:1500) with HeLa cells lysate 1600ug.

