

Anti-BCAM / CD239 antibody



Catalog Number: 106271

Product name

Anti-BCAM / CD239 antibody

Immunogen

[Human BCAM / CD239 \(His Tag\) recombinant protein](#)

Specificity

Human BCAM

Antibody description

Rabbit polyclonal to BCAM / CD239

Preparation

Produced in rabbits immunized with purified, recombinant Human BCAM (rh BCAM; NP_005572.2; Met1-Ala547). BCAM specific IgG was purified by Human BCAM affinity chromatography.

Formulation

0.2 µm filtered solution in PBS with 5% trehalose

Storage

This antibody can be stored at 2°C-8°C for one month without detectable loss of activity. Antibody products are stable for twelve months from date of receipt when stored at -20°C to -80°C.

Preservative-Free.

Sodium azide is recommended to avoid contamination (final concentration 0.05%-0.1%). It is toxic to cells and should be disposed of properly. Avoid repeated freeze-thaw cycles.

Clonality

Polyclonal

Ig Type

Rabbit IgG

Applications

ELISA, WB, IHC-P, IP

Dilutions

WB: 2-5 µg/mL

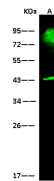
ELISA: 0.1-0.2 µg/mL

This antibody can be used at 0.1-0.2 µg/mL with the appropriate secondary reagents to detect Human BCAM. The detection limit for Human BCAM is approximately 0.00975 ng/well.

IHC-P: 0.1-2 µg/mL

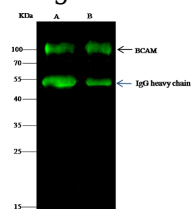
IP: 1-4 µg/mg of lysate

Validations



Lanes	A
Items	
Sample (whole cell lysate)	A431
Sample Volume (µg/lane)	30
Gel	13% SDS-PAGE reducing gel
Recommended Concentration	2-5 µg/ml
Secondary Antibody	DyLight 800-labeled Antibody To Rabbit IgG (H+L), at 1:5000 dilution.
Explanation	Developed using Odyssey imaging system. Predicted band size: 67 kDa Observed band size: 90 kDa Additional bands at: 43 kDa [We are unsure as to the identity of these extra bands. They are possible non-specific bindings].

BCAM Antibody, Rabbit PAb, Antigen Affinity



Lanes	A	B
Items		
Sample (whole cell lysate)	H1ds	MCF-7
Sample quantity	0.5 mg	
IP antibody quantity	2 µg	
Protein G agarose	1.5 µl of 50% Protein G Agarose	
Gel	13% SDS-PAGE reducing gel	
Primary antibody	BCAM antibody at 5 µg/ml	
Secondary antibody	DyLight 800-labeled antibody to rabbit IgG (H+L), at 1:5000 dilution.	

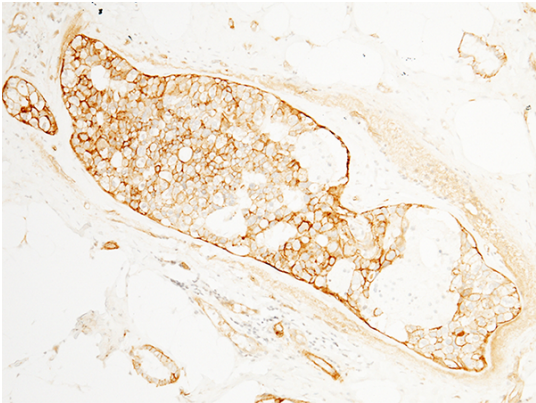
Purified, Western blot

BCAM Antibody, Rabbit PAb, Antigen Affinity
Purified, Immunoprecipitation

Anti-BCAM / CD239 antibody

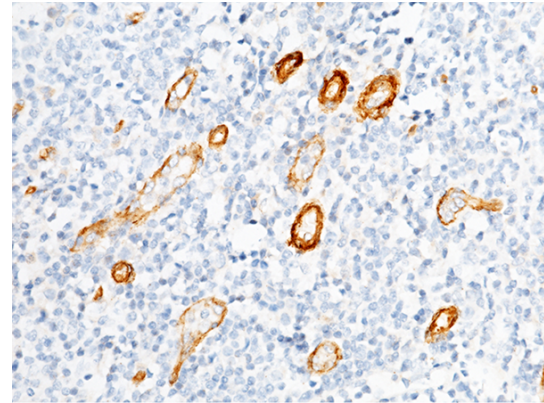


Catalog Number: 106271



BCAM Antibody, Rabbit PAb, Antigen Affinity Purified, Immunohistochemistry

Immunochemical staining of human BCAM in human breast carcinoma with rabbit polyclonal antibody (1 $\mu\text{g}/\text{mL}$, formalin-fixed paraffin embedded sections). Positive staining was localized to the epithelia and endothelium.



BCAM Antibody, Rabbit PAb, Antigen Affinity Purified, Immunohistochemistry

Immunochemical staining of human BCAM in human tonsil with rabbit polyclonal antibody (1 $\mu\text{g}/\text{mL}$, formalin-fixed paraffin embedded sections). Positive staining was localized to the endothelium of blood vessel walls.