

# SHE antibody

Catalog Number: 115271

## Product name

SHE antibody

IHC: 1:20-1:200

IF: 1:10-1:100

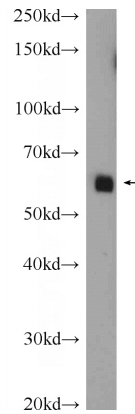
## Specificity

Human, Mouse; other species not tested.

## Validations

## Antibody description

SHE Rabbit Polyclonal antibody. Positive IF detected in HepG2 cells. Positive IHC detected in human breast cancer tissue, human testis tissue. Positive WB detected in mouse testis tissue. Observed molecular weight by Western-blot: 55 kDa



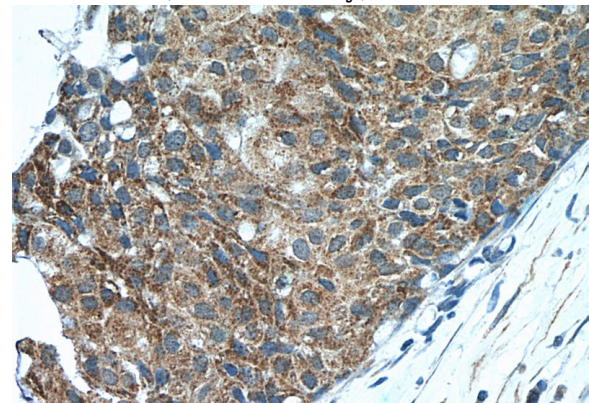
## Preparation

This antibody was obtained by immunization of Peptide (Accession Number: NM\_001010846). Purification method: Antigen Affinity purified.

mouse testis tissue were subjected to SDS PAGE followed by western blot with Catalog No:115271(SHE Antibody) at dilution of 1:300

## Formulation

PBS with 0.02% sodium azide and 50% glycerol pH 7.3.



## Storage

Store at -20°C. DO NOT ALIQUOT

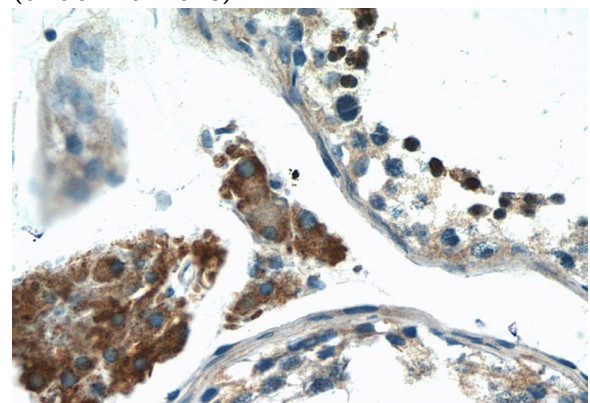
## Clonality

Polyclonal

Immunohistochemistry of paraffin-embedded human breast cancer tissue slide using Catalog No:115271(SHE Antibody) at dilution of 1:50 (under 40x lens)

## Ig Type

Rabbit IgG



## Applications

ELISA, IHC, WB, IF

## Dilutions

Recommended Dilution:

WB: 1:200-1:1000

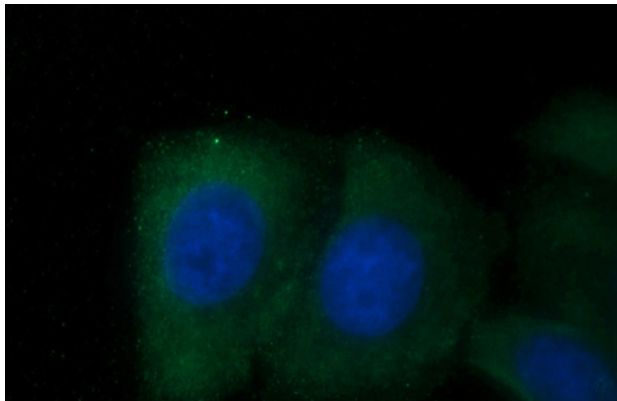
Immunohistochemistry of paraffin-embedded

# SHE antibody

Catalog Number: 115271

---

human testis tissue slide using Catalog No:115271(SHE Antibody) at dilution of 1:50 (under 40x lens)



Immunofluorescent analysis of HepG2 cells using Catalog No:115271(SHE Antibody) at dilution of 1:25 and Alexa Fluor 488-conjugated AffiniPure Goat Anti-Rabbit IgG(H+L)