

# PTGES3 antibody



Catalog Number: 114271

## Product name

PTGES3 antibody

## Immunogen

[Human PTGES3 Recombinant protein \(GST tag\)](#)

## Specificity

Human, Mouse, Rat; other species not tested.

## Antibody description

PTGES3 Rabbit Polyclonal antibody. Positive IF detected in HeLa cells. Positive FC detected in HeLa cells. Positive IP detected in mouse heart tissue. Positive WB detected in rat brain tissue, mouse brain tissue, mouse heart tissue, rat heart tissue. Observed molecular weight by Western-blot: 21-23kd

## Preparation

This antibody was obtained by immunization of PTGES3 recombinant protein (Accession Number: NM\_006601). Purification method: Antigen affinity purified.

## Formulation

PBS with 0.02% sodium azide and 50% glycerol pH 7.3.

## Storage

Store at -20°C. DO NOT ALIQUOT

## Clonality

Polyclonal

## Ig Type

Rabbit IgG

## Applications

ELISA, IF, IP, WB, FC

## Dilutions

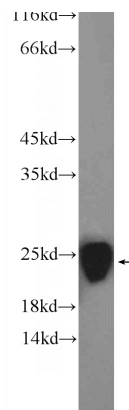
Recommended Dilution:

WB: 1:500-1:5000

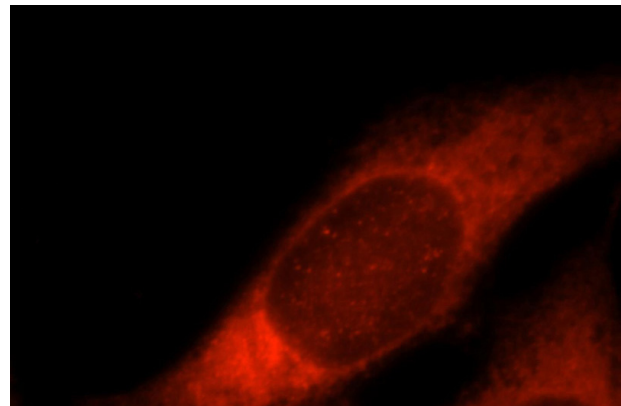
IP: 1:200-1:1000

IF: 1:10-1:100

## Validations



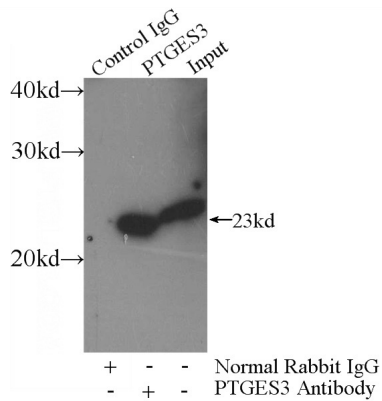
rat brain tissue were subjected to SDS PAGE followed by western blot with Catalog No:114271 (PTGES3 Antibody) at dilution of 1:1000



Immunofluorescent analysis of HeLa cells, using PTGES3 antibody Catalog No:114271 at 1:25 dilution and Rhodamine-labeled goat anti-rabbit

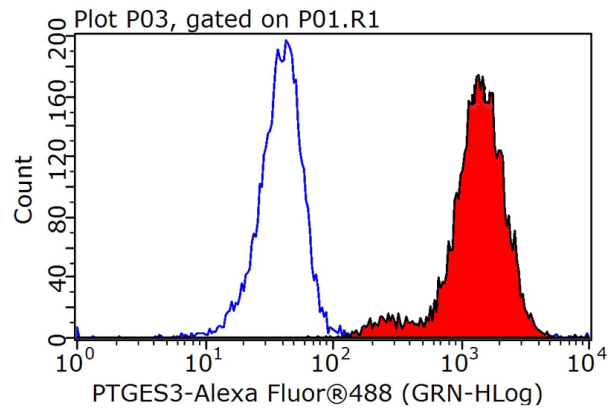
# PTGES3 antibody

Catalog Number: 114271



IgG (red).

IP Result of anti-PTGES3 (IP:Catalog No:114271, 3ug; Detection:Catalog No:114271 1:300) with mouse heart tissue lysate 4000ug.



1X10<sup>6</sup> HeLa cells were stained with 0.2ug PTGES3 antibody (Catalog No:114271, red) and control antibody (blue). Fixed with 90% MeOH blocked with 3% BSA (30 min). Alexa Fluor 488-conjugated AffiniPure Goat Anti-Rabbit IgG(H+L) with dilution 1:1000.