

General Information

Protein Construction

A DNA sequence encoding the human CD200R1 (AAI43394.1) extracellular domain (Met 1-Leu 266) was fused with a polyhistidine tag at the C-terminus.

Organism

Human

Expression Host

Human Cells

QC Testing

Activity

Measured by its binding ability in a functional ELISA. Immobilized human CD200R1 at 1 µg/ml (100 µl/well) can bind human CD200 with a linear range of 0.12-16 ng/ml.

Purity

> 98 % as determined by SDS-PAGE

Endotoxin

< 1.0 EU per µg of the protein as determined by the LAL method

Stability

Samples are stable for up to twelve months from date of receipt at -70°C

Predicted N terminal

Ala 27

Molecular Mass

The secreted recombinant human CD200R1 comprises 251 amino acids after removal of the signal peptide and has a predicted molecular mass of 28.2 kDa. As a result of glycosylation, rh CD200R1 migrates as an approximately 50-60 kDa band in SDS-PAGE under reducing conditions.

Formulation

Lyophilized from sterile PBS, pH 7.4

1. 5 % trehalose and mannitol are added as protectants before lyophilization.

2. Please contact us for any concerns or special requirements.

Usage Guide

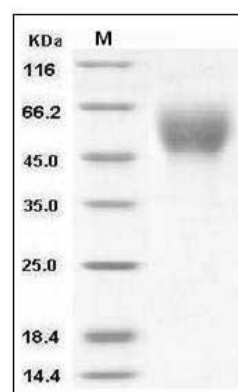
Storage

Store it under sterile conditions at -20°C to -80°C. It is recommended that the protein be aliquoted for optimal storage. Avoid repeated freeze-thaw cycles.

Reconstitution

Adding sterile water, prepare a stock solution of 0.25 mg/ml. Concentration is measured by UV-Vis.

SDS-PAGE



Human CD200R1 / CD200R Protein (His Tag)
SDS-PAGE