

Transgelin-2-specific antibody



Catalog Number: 106971

Product name

Transgelin-2-specific antibody

Specificity

Human, Mouse, Rat; other species not tested.

Antibody description

Transgelin-2-specific Rabbit Polyclonal antibody. Positive FC detected in HepG2 cells. Positive IHC detected in human kidney tissue, human liver tissue. Positive IF detected in HepG2 cells. Positive IP detected in L02 cells. Positive WB detected in rat stomach tissue, HEK-293 cells, human stomach tissue, mouse liver tissue, mouse spleen tissue. Observed molecular weight by Western-blot: 22kd

Preparation

This antibody was obtained by immunization of Peptide (Accession Number: NM_003564). Purification method: Antigen affinity purified.

Formulation

PBS with 0.02% sodium azide and 50% glycerol pH 7.3.

Storage

Store at -20°C. DO NOT ALIQUOT

Clonality

Polyclonal

Ig Type

Rabbit IgG

Applications

ELISA, IHC, IF, IP, FC, WB

Dilutions

Recommended Dilution:

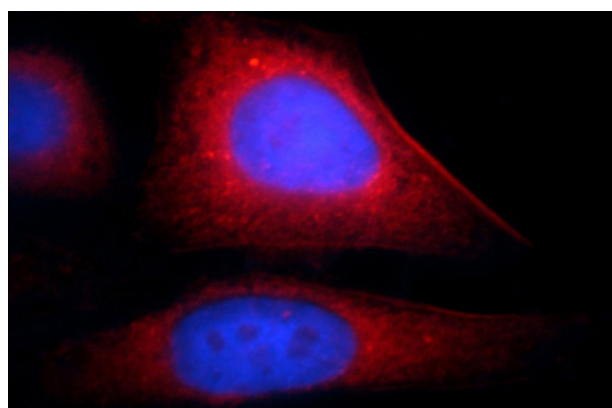
WB: 1:200-1:2000

IP: 1:200-1:2000

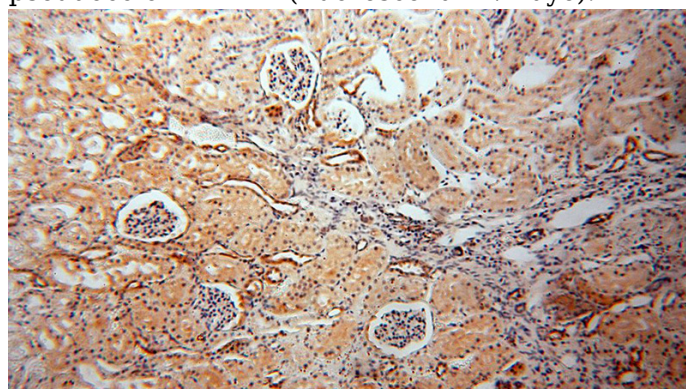
IHC: 1:20-1:200

IF: 1:10-1:100

Validations



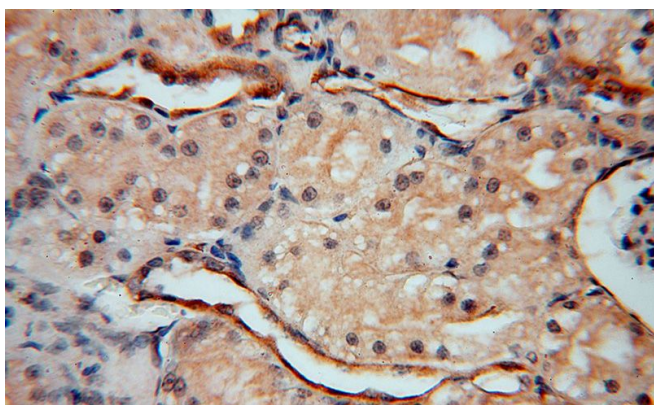
Immunofluorescent analysis of HepG2 cells, using TAGLN2 antibody Catalog No: at 1:25 dilution and Rhodamine-labeled goat anti-rabbit IgG (red). Blue pseudocolor = DAPI (fluorescent DNA dye).



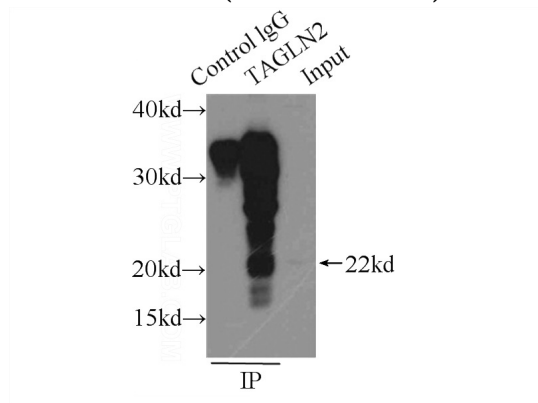
Immunohistochemical of paraffin-embedded human kidney using Catalog No:116335(Transgelin-2-specific antibody) at dilution of 1:50 (under 10x lens)

Transgelin-2-specific antibody

Catalog Number: 106971

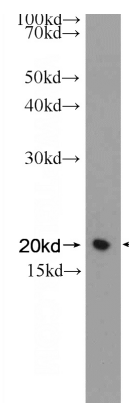


Immunohistochemical of paraffin-embedded human kidney using Catalog No:116335(Transgelin-2-specific antibody) at dilution of 1:50 (under 40x lens)

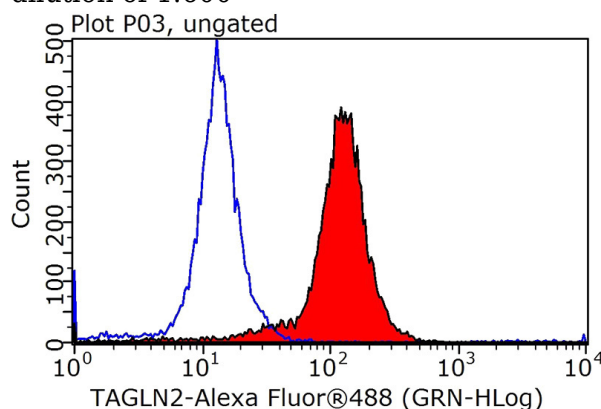


IP Result of anti-Transgelin-2-specific (IP:Catalog No:116335, 3ug; Detection:Catalog No:116335)

1:500) with L02 cells lysate 1000ug.



rat stomach tissue were subjected to SDS PAGE followed by western blot with Catalog No:116335(Transgelin-2-specific Antibody) at dilution of 1:600



1X10⁶ HepG2 cells were stained with 0.2ug Transgelin-2-specific antibody (Catalog No:116335, red) and control antibody (blue). Fixed with 90% MeOH blocked with 3% BSA (30 min). Alexa Fluor 488-conjugated AffiniPure Goat Anti-Rabbit IgG(H+L) with dilution 1:1000.