

CRMP2 antibody



Catalog Number: 109571

Product name

CRMP2 antibody

IP: 1:200-1:1000

IHC: 1:20-1:200

Specificity

Human, Mouse, Rat; other species not tested.

IF: 1:20-1:200

Antibody description

CRMP2 Rabbit Polyclonal antibody. Positive IHC detected in human testis tissue. Positive IF detected in SH-SY5Y cells. Positive WB detected in mouse brain tissue, SH-SY5Y cells. Positive IP detected in mouse brain tissue. Observed molecular weight by Western-blot: 62-66 kDa

Preparation

This antibody was obtained by immunization of CRMP2 recombinant protein (Accession Number: NM_001386). Purification method: Antigen affinity purified.

Formulation

PBS with 0.02% sodium azide and 50% glycerol pH 7.3.

Storage

Store at -20°C. DO NOT ALIQUOT

Clonality

Polyclonal

Ig Type

Rabbit IgG

Applications

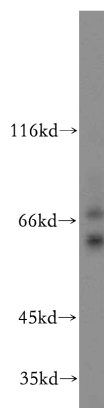
ELISA, WB, IHC, IP, IF

Dilutions

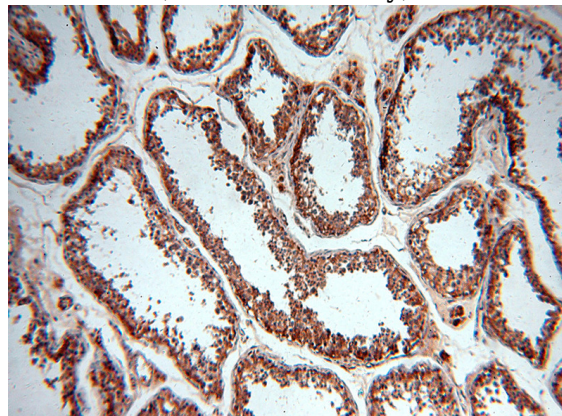
Recommended Dilution:

WB: 1:500-1:5000

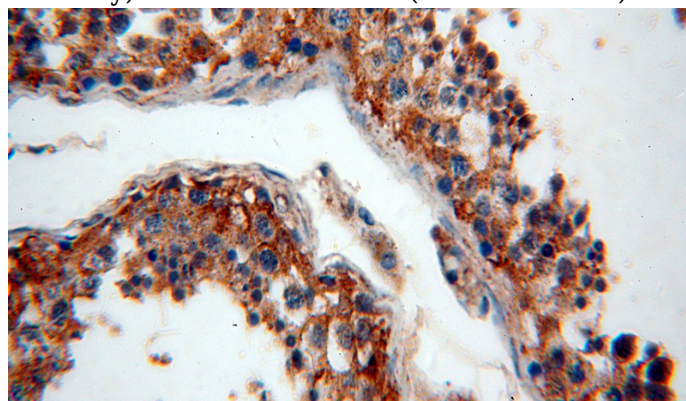
Validations



mouse brain tissue were subjected to SDS PAGE followed by western blot with Catalog No:109571(DPYSL2 antibody) at dilution of 1:500



Immunohistochemical of paraffin-embedded human testis using Catalog No:109571(DPYSL2 antibody) at dilution of 1:100 (under 10x lens)

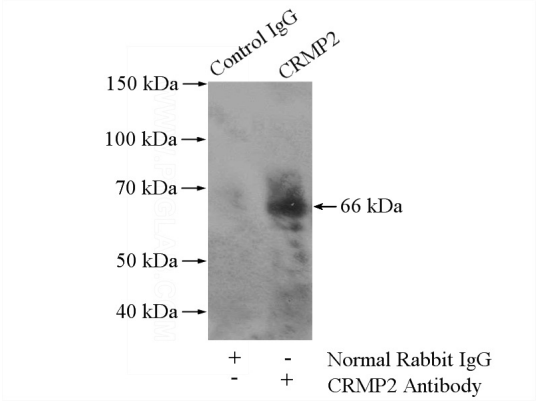


CRMP2 antibody



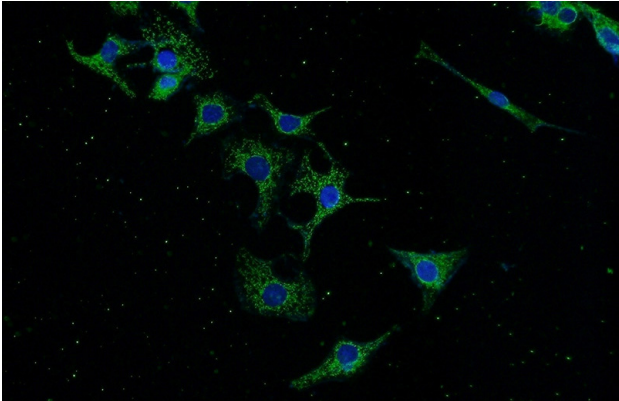
Catalog Number: 109571

Immunohistochemical of paraffin-embedded human testis using Catalog No:109571(DPYSL2 antibody) at dilution of 1:100 (under 40x lens)



IP Result of anti-DPYSL2 (IP:Catalog No:109571, 4ug; Detection:Catalog No:109571 1:300) with

mouse brain tissue lysate 3200ug.



Immunofluorescent analysis of SH-SY5Y cells using Catalog No:109571(DPYSL2 Antibody) at dilution of 1:50 and Alexa Fluor 488-congugated AffiniPure Goat Anti-Rabbit IgG(H+L)