

# Anti-SPARCL1 / SPARC-like 1 antibody



Catalog Number: 106571

## Product name

Monoclonal

Anti-SPARCL1 / SPARC-like 1 antibody

## Ig Type

## Specificity

Mouse IgG1

Human SPARCL1

**No cross-reactivity** in ELISA with Mouse SDC1

## Applications

FCM

## Antibody description

## Dilutions

Mouse monoclonal to SPARCL1 / SPARC-like 1

FCM

## Preparation

## Validations

This antibody was produced from a hybridoma resulting from the fusion of a mouse myeloma with B cells obtained from a mouse immunized with purified, recombinant Human SPARCL1 (rh SPARCL1; NP\_004675.3; Met 1-Phe 664) and conjugated with FITC under optimum conditions, the unreacted FITC was removed.

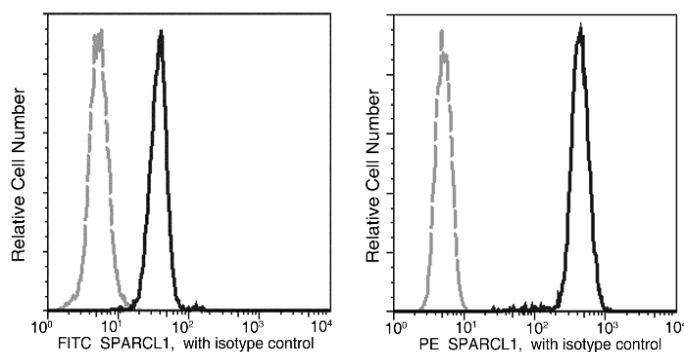
## Formulation

Aqueous solution containing 0.5% BSA and 0.09% sodium azide

## Storage

This antibody is stable for 12 months from date of receipt when stored at 2°C-8°C. Protected from prolonged exposure to light. Do not freeze ! Sodium azide is toxic to cells and should be disposed of properly. Flush with large volumes of water during disposal.

## Clonality



SPARCL1 Antibody (FITC), Mouse MAb, Flow cytometric

Profile of anti-SPARCL1 reactivity on HL60 cells analyzed by flow cytometry. The cells were treated according to manufacturer's manual (BD Pharmingen™ Cat. No. 554714), and stained with FITC conjugated Mouse anti-SPARCL1. The fluorescence histograms were derived from gated events with the forward and side light-scatter characteristics of intact cells.