

SPIN1-Specific antibody



Catalog Number: 115571

Product name

SPIN1-Specific antibody

IHC: 1:20-1:200

IF: 1:10-1:100

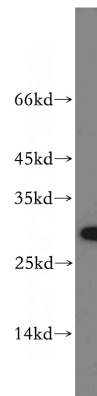
Specificity

Human; other species not tested.

Validations

Antibody description

SPIN1-Specific Rabbit Polyclonal antibody. Positive WB detected in SKOV-3 cells, A2780 cells, HEK-293 cells. Positive IF detected in Hela cells. Positive IHC detected in human ovary tumor tissue. Observed molecular weight by Western-blot: 30kd



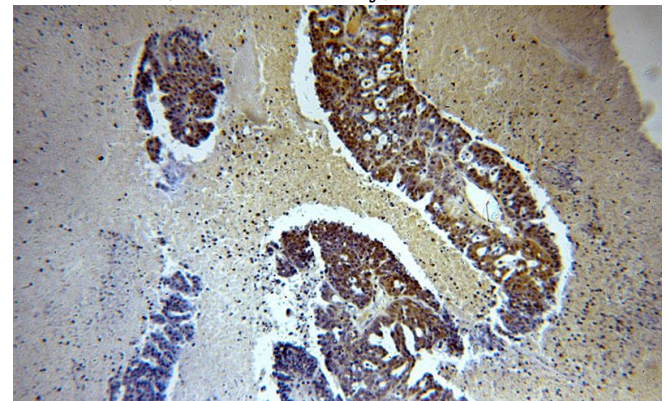
Preparation

This antibody was obtained by immunization of Peptide (Accession Number: NM_006717). Purification method: Antigen affinity purified.

SKOV-3 cells were subjected to SDS PAGE followed by western blot with Catalog No:115571(SPIN1 antibody) at dilution of 1:500

Formulation

PBS with 0.02% sodium azide and 50% glycerol pH 7.3.



Storage

Store at -20°C. DO NOT ALIQUOT

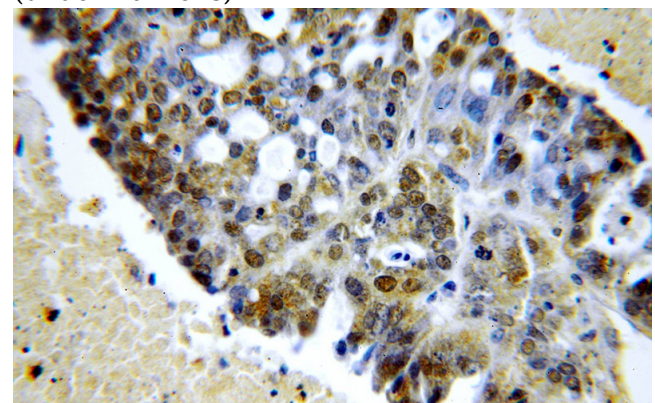
Clonality

Polyclonal

Immunohistochemical of paraffin-embedded human ovary tumor using Catalog No:115571(SPIN1 antibody) at dilution of 1:100 (under 10x lens)

Ig Type

Rabbit IgG



Applications

ELISA, WB, IHC, IF

Dilutions

Recommended Dilution:

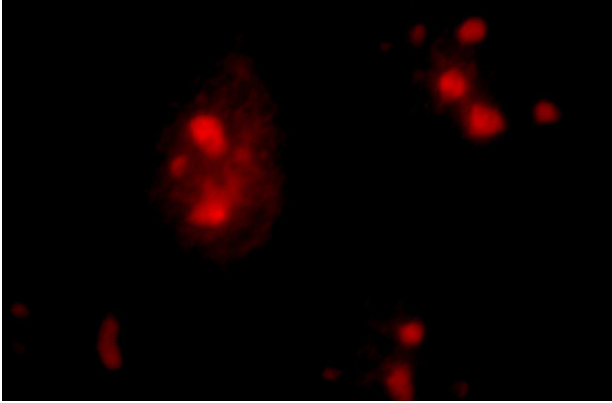
WB: 1:500-1:5000

Immunohistochemical of paraffin-embedded

SPIN1-Specific antibody

Catalog Number: 115571

human ovary tumor using Catalog
No:115571(SPIN1 antibody) at dilution of 1:100
(under 40x lens)



Immunofluorescent analysis of Hela cells, using
SPIN1 antibody Catalog No:115571 at 1:25
dilution and Rhodamine-labeled goat anti-rabbit
IgG (red).