

XRCC2 Polyclonal Antibody



Catalog Number: 163571

Product name

XRCC2 Polyclonal Antibody

Specificity

Human, Mouse, Rat

Antibody description

Polyclonal antibody to XRCC2

Preparation

Antigen: Recombinant fusion protein containing a sequence corresponding to amino acids 1-280 of human XRCC2 (NP_005422.1).

Formulation

PBS with 0.02% sodium azide, 50% glycerol, pH7.3.

Storage

Store at -20°C. Avoid freeze / thaw cycles.

Clonality

Polyclonal

Ig Type

Rabbit IgG

Applications

WB, IHC, IF

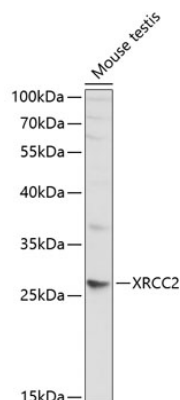
Dilutions

WB 1:500 - 1:2000

IHC 1:50 - 1:200

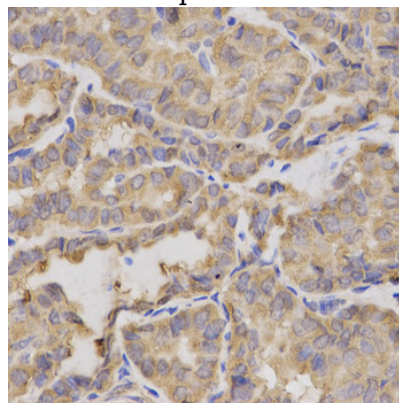
IF 1:50 - 1:200

Validations



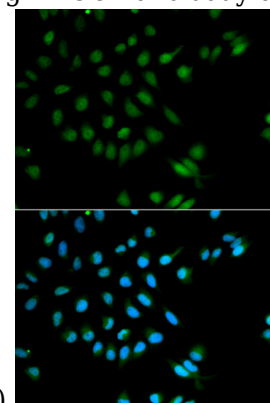
Western blot - XRCC2 Polyclonal Antibody

Western blot analysis of extracts of mouse testis, using XRCC2 antibody at 1:1000 dilution. Secondary antibody: HRP Goat Anti-Rabbit IgG (H+L) at 1:10000 dilution. Lysates/proteins: 25ug per lane. Blocking buffer: 3% nonfat dry milk in TBST. Detection: ECL Basic Kit. Exposure time: 30s.



Immunohistochemistry - XRCC2 Polyclonal Antibody

Immunohistochemistry of paraffin-embedded human thyroid cancer using XRCC2 antibody at



dilution of 1:200 (40x lens).

XRCC2 Polyclonal Antibody

Catalog Number: 163571

Immunofluorescence - XRCC2 Polyclonal Antibody

Immunofluorescence - XRCC2 Polyclonal Antibody

Immunofluorescence analysis of MCF-7 cells using XRCC2 antibody . Blue: DAPI for nuclear staining.

Immunofluorescence analysis of A549 cells using XRCC2 antibody .

