

General Information

Gene Name Synonym

Heparin cofactor II; Protease inhibitor leuserpin-2; Serpin D1

Protein Construction

A DNA sequence encoding the mouse SerpinD1 precursor (NP_032249.3) (Met1-Ser 478) was expressed, with a C-terminal polyhistidine tag.

Organism

Mouse

Expression Host

Human Cells

QC Testing

Activity

Measured by its ability to inhibit thrombin (Sigma, T4648) cleavage of fluorogenic peptide substrate Boc-VPR-AMC (R&D Systems, Catslog# ES011). The IC₅₀ value is < 1.2 nM.

Purity

> 98 % as determined by SDS-PAGE

Endotoxin

< 1.0 EU per µg of the protein as determined by the LAL method

Stability

Samples are stable for up to twelve months from date of receipt at -70°C

Predicted N terminal

Glu 24

Molecular Mass

The recombinant mouse SerpinD1 consists of 466 amino acids and predicts a molecular mass of 53.5 kDa. By SDS-PAGE under reducing conditions, the apparent molecular mass of rmSerpinD1 is approximately 65-70 kDa as a result of glycosylation.

Formulation

Lyophilized from sterile 25mM HEPES, 150mM NaCl, pH 7.4

1. 5 % trehalose and mannitol are added as protectants before lyophilization.

2. Please contact us for any concerns or special requirements.

Usage Guide

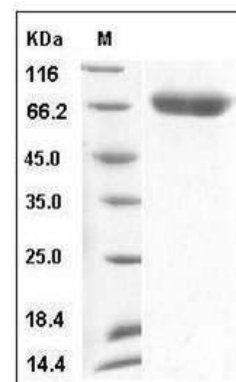
Storage

Store it under sterile conditions at -20°C to -80°C. It is recommended that the protein be aliquoted for optimal storage. Avoid repeated freeze-thaw cycles.

Reconstitution

Adding sterile water, prepare a stock solution of 0.25 mg/ml. Concentration is measured by UV-Vis.

SDS-PAGE



Mouse SerpinD1 / HCII Protein (His Tag) SDS-PAGE