

# FAM13A antibody



Catalog Number: 110571

## Product name

FAM13A antibody

IHC: 1:20-1:200

IF: 1:10-1:100

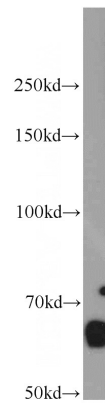
## Specificity

Human, Mouse; other species not tested.

## Validations

## Antibody description

FAM13A Rabbit Polyclonal antibody. Positive IHC detected in human skeletal muscle tissue, human tonsil tissue. Positive IF detected in HeLa cells. Positive WB detected in mouse kidney tissue, mouse lung tissue, mouse ovary tissue, mouse pancreas tissue. Observed molecular weight by Western-blot: 65kd



## Preparation

This antibody was obtained by immunization of Peptide (Accession Number: NM\_014883). Purification method: Antigen affinity purified.

mouse kidney tissue were subjected to SDS PAGE followed by western blot with Catalog No:110571(FAM13A antibody) at dilution of 1:500

## Formulation

PBS with 0.02% sodium azide and 50% glycerol pH 7.3.



## Storage

Store at -20°C. DO NOT ALIQUOT

## Clonality

Polyclonal

Immunohistochemical of paraffin-embedded human skeletal muscle using Catalog No:110571(FAM13A antibody) at dilution of 1:50 (under 10x lens)

## Ig Type

Rabbit IgG

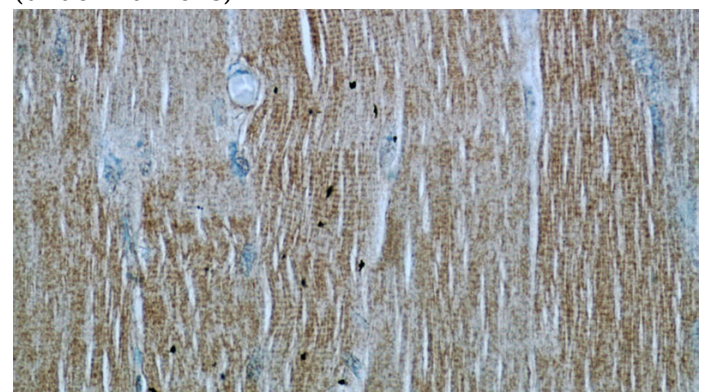
## Applications

ELISA, WB, IHC, IF

## Dilutions

Recommended Dilution:

WB: 1:200-1:2000



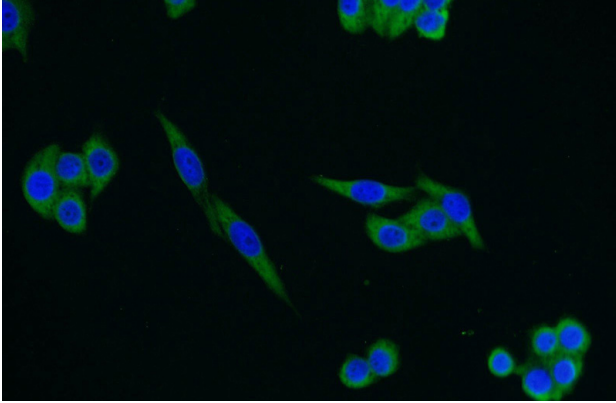
Immunohistochemical of paraffin-embedded

# FAM13A antibody

Catalog Number: 110571

---

human skeletal muscle using Catalog No:110571(FAM13A antibody) at dilution of 1:50 (under 40x lens)



Immunofluorescent analysis of HeLa cells using Catalog No:110571(FAM13A Antibody) at dilution of 1:25 and Alexa Fluor 488-conjugated AffiniPure Goat Anti-Rabbit IgG(H+L)