

Anti-Vimentin Rabbit antibody



Catalog Number: 167171

Product name

Anti-Vimentin Rabbit antibody

Specificity

Human, Mouse, Rat

Antibody description

Vimentin Rabbit polyclonal antibody

Preparation

Antigen: A synthesized peptide derived from human Vimentin

Formulation

Rabbit IgG in phosphate buffered saline , pH 7.4, 150mM NaCl, 0.02% sodium azide and 50% glycerol.

Storage

Store at 4°C short term. Store at -20°C long term. Avoid freeze / thaw cycle.

Clonality

Polyclonal

Ig Type

Rabbit IgG

Applications

WB, IHC-P, ICC/IF, FC

Dilutions

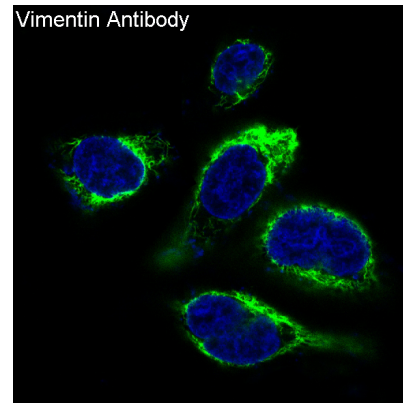
WB: 1/500-1/2000

IHC: 1/50-1/200

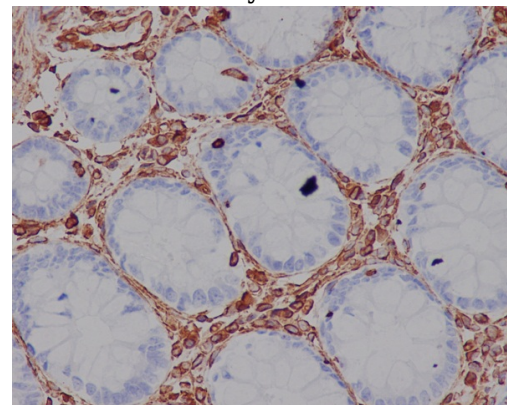
ICC/IF: 1/50-1/200

FC: 1/30

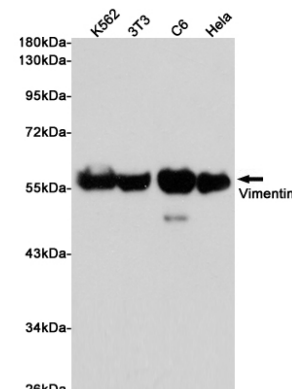
Validations



Immunofluorescent analysis of HeLa cells, using Vimentin Antibody.



Immunohistochemical analysis of paraffin-embedded human colon, using Vimentin Antibody.



Western blot analysis of extracts from K562, 3T3, C6 and HeLa cells using Vimentin Rabbit pAb at 1:1000 dilution. Predicted band size: 54kDa. Observed band size: 54kDa.