

Anti-C1 inhibitor/SerpinG1 antibody



Catalog Number: 102171

Product name

Anti-C1 inhibitor/SerpinG1 antibody

Immunogen

[Human C1 inhibitor/SerpinG1 \(His Tag\) recombinant protein](#)

Specificity

Human Serpin G1 / C1IN

Antibody description

Rabbit polyclonal to C1 inhibitor/SerpinG1

Preparation

Produced in rabbits immunized with purified, recombinant Human SerpinG1 (rh SerpinG1; NP_000053.2; Met 1-Ala 500). SerpinG1 specific IgG was purified by human SerpinG1 affinity chromatography.

Formulation

0.2 µm filtered solution in PBS with 5% trehalose

Storage

This antibody can be stored at 2°C-8°C for one month without detectable loss of activity. Antibody products are stable for twelve months from date of receipt when stored at -20°C to -80°C.

Preservative-Free.

Sodium azide is recommended to avoid contamination (final concentration 0.05%-0.1%). It is toxic to cells and should be disposed of properly. Avoid repeated freeze-thaw cycles.

Clonality

Polyclonal

Ig Type

Rabbit IgG

Applications

ELISA, WB, IHC-P

Dilutions

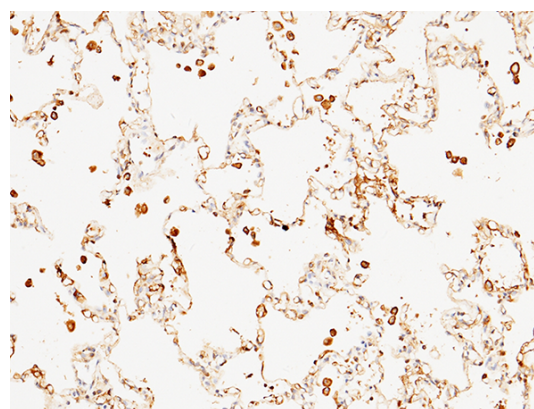
WB: 2-10 µg/mL

ELISA: 0.5-1.0 µg/mL

This antibody can be used at 0.5-1.0 µg/mL with the appropriate secondary reagents to detect Human SerpinG1. The detection limit for Human SerpinG1 is 0.00245 ng/well.

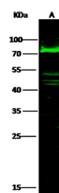
IHC-P: 0.1-2 µg/mL

Validations



SerpinG1 / C1 inhibitor / C1IN Antibody, Rabbit PAb, Antigen Affinity Purified, Immunohistochemistry

Immunochemical staining of human serpinG1 in human lung with rabbit polyclonal antibody (1 µg/mL, formalin-fixed paraffin embedded



Items	Lanes	A
Sample (whole cell lysate)		HepG2
Sample Volume (µg/lane)		30
Gel		13% SDS-PAGE reducing gel
Recommended Concentration		2-10 µg/ml
Secondary Antibody		Dylight 800-labeled Antibody To Rabbit IgG (H+L), at 1:5000 dilution.

sections).

Anti-C1 inhibitor/SerpinG1 antibody



Catalog Number: 102171

SerpinG1 / C1 inhibitor / C1IN Antibody, Rabbit

PAb, Antigen Affinity Purified, Western blot