

# TBCC antibody

Catalog Number: 115871

## Product name

TBCC antibody

## Specificity

Human, Mouse, Rat; other species not tested.

## Antibody description

TBCC Rabbit Polyclonal antibody. Positive WB detected in HeLa cells, human brain tissue, rat liver tissue. Positive IF detected in HepG2 cells. Positive FC detected in HepG2 cells. Observed molecular weight by Western-blot: 39 kDa

## Preparation

This antibody was obtained by immunization of TBCC recombinant protein (Accession Number: NM\_003192). Purification method: Antigen affinity purified.

## Formulation

PBS with 0.02% sodium azide and 50% glycerol pH 7.3.

## Storage

Store at -20°C. DO NOT ALIQUOT

## Clonality

Polyclonal

## Ig Type

Rabbit IgG

## Applications

ELISA, WB, IF, FC

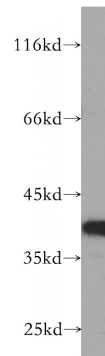
## Dilutions

Recommended Dilution:

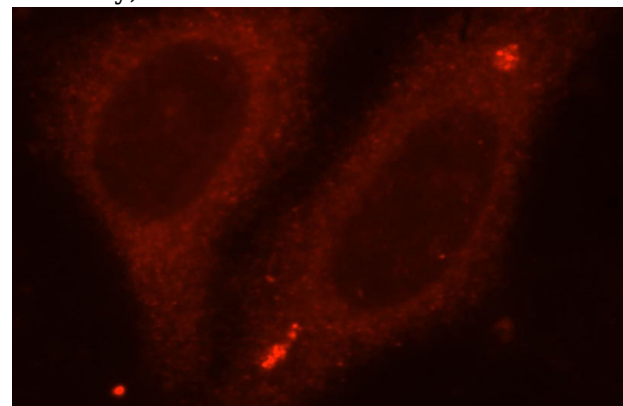
WB: 1:500-1:5000

IF: 1:10-1:100

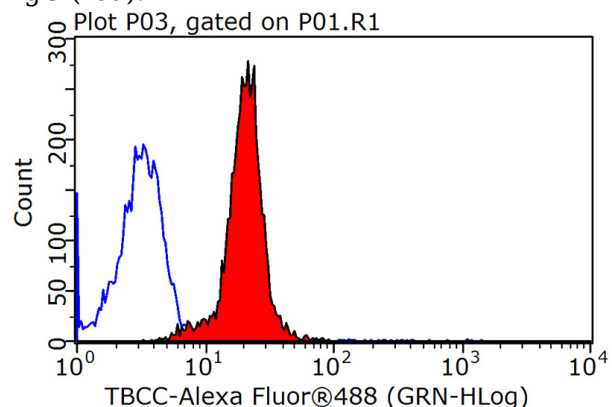
## Validations



HeLa cells were subjected to SDS PAGE followed by western blot with Catalog No:115871(TBCC antibody) at dilution of 1:500



Immunofluorescent analysis of HepG2 cells, using TBCC antibody Catalog No:115871 at 1:25 dilution and Rhodamine-labeled goat anti-rabbit IgG (red).



1X10<sup>6</sup> HepG2 cells were stained with 0.2ug TBCC antibody (Catalog No:115871, red) and

# TBCC antibody



Catalog Number: 115871

---

control antibody (blue). Fixed with 90% MeOH  
blocked with 3% BSA (30 min). Alexa Fluor 488-

conjugated AffiniPure Goat Anti-Rabbit IgG(H+L)  
with dilution 1:1500.