

C21orf33 Polyclonal Antibody



Catalog Number: 164871

Product name

C21orf33 Polyclonal Antibody

Specificity

Human, Mouse, Rat

Antibody description

Polyclonal antibody to C21orf33

Preparation

Antigen: Recombinant fusion protein containing a sequence corresponding to amino acids 42-268 of human C21orf33 (NP_004640.4).

Formulation

PBS with 0.02% sodium azide, 50% glycerol, pH7.3.

Storage

Store at -20°C. Avoid freeze / thaw cycles.

Clonality

Polyclonal

Ig Type

Rabbit IgG

Applications

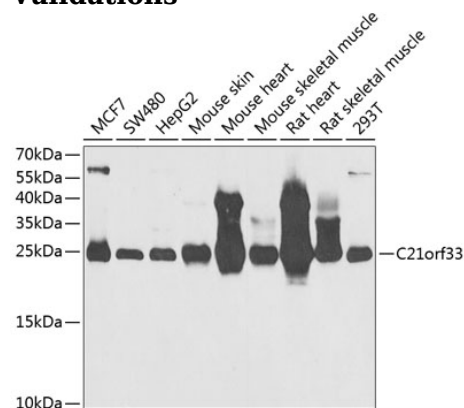
WB, IF

Dilutions

WB 1:500 - 1:2000

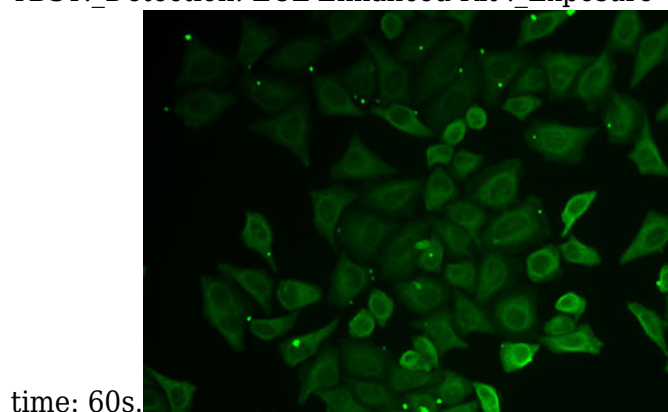
IF 1:10 - 1:100

Validations



Western blot - C21orf33 Polyclonal Antibody

Western blot analysis of extracts of various cell lines, using C21orf33 antibody at 1:1000 dilution. Secondary antibody: HRP Goat Anti-Rabbit IgG (H+L) at 1:10000 dilution. Lysates/proteins: 25ug per lane. Blocking buffer: 3% nonfat dry milk in TBST. Detection: ECL Enhanced Kit. Exposure



Immunofluorescence - C21orf33 Polyclonal Antibody

Immunofluorescence analysis of U2OS cells using C21orf33 antibody.