

# E2F6 Polyclonal Antibody

Catalog Number: 163871

## Product name

E2F6 Polyclonal Antibody

## Specificity

Human

## Antibody description

Polyclonal antibody to E2F6

## Preparation

Antigen: Recombinant fusion protein containing a sequence corresponding to amino acids 1-281 of human E2F6 (NP\_937987.2).

## Formulation

PBS with 0.02% sodium azide, 50% glycerol, pH7.3.

## Storage

Store at -20°C. Avoid freeze / thaw cycles.

## Clonality

Polyclonal

## Ig Type

Rabbit IgG

## Applications

WB, IHC, IF, IP

## Dilutions

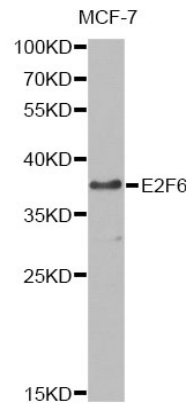
WB 1:500 - 1:2000

IHC 1:50 - 1:200

IF 1:50 - 1:200

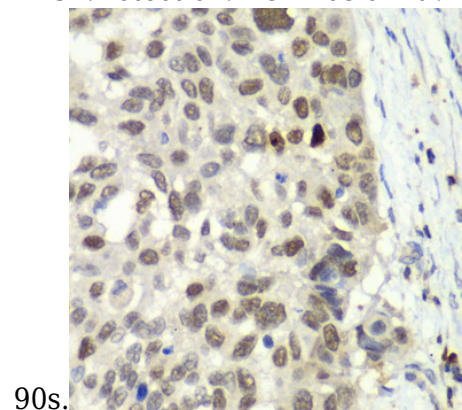
IP 1:20 - 1:50

## Validations



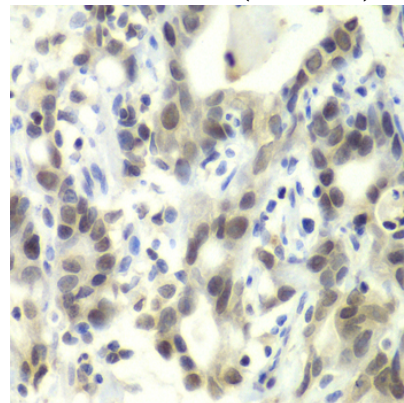
## Western blot - E2F6 Polyclonal Antibody

Western blot analysis of extracts of MCF-7 cells, using E2F6 antibody at 1:1000 dilution. Secondary antibody: HRP Goat Anti-Rabbit IgG (H+L) at 1:10000 dilution. Lysates/proteins: 25ug per lane. Blocking buffer: 3% nonfat dry milk in TBST. Detection: ECL Basic Kit. Exposure time:



## Immunohistochemistry - E2F6 Polyclonal Antibody

Immunohistochemistry of paraffin-embedded human esophageal cancer using E2F6 antibody at dilution of 1:100 (40x lens).



# E2F6 Polyclonal Antibody

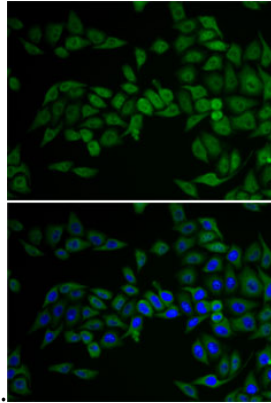
Catalog Number: 163871

---

Immunohistochemistry - E2F6 Polyclonal Antibody

E2F6 antibody . Blue: DAPI for nuclear staining.

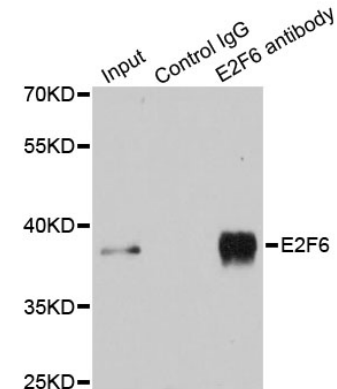
Immunohistochemistry of paraffin-embedded human gastric cancer using E2F6 antibody at



dilution of 1:100 (40x lens).

Immunofluorescence - E2F6 Polyclonal Antibody

Immunofluorescence analysis of U2OS cells using



Immunoprecipitation - E2F6 Polyclonal Antibody

Immunoprecipitation analysis of 200ug extracts of MCF-7 cells using 3ug E2F6 antibody . Western blot was performed from the immunoprecipitate using E2F6 antibody at a dilution of 1:500.