

# Human CD166/ALCAM (His Tag) recombinant protein



Catalog Number: 502871

## General Information

### Gene Name Synonym

Activated leukocyte cell adhesion molecule

### Protein Construction

A DNA sequence encoding the extracellular domain (Met 1-Ala 526) of human ALCAM (NP\_001618.2) was expressed, with the C-terminal polyhistidine tag.

### Organism

Human

### Expression Host

Human Cells

## QC Testing

### Activity

Immobilized human ALCAM-His at 10 µg/ml (100 µl/well) can bind mouse CD6-Fc (Cat:500293), The EC<sub>50</sub> of mouse CD6-Fc (Cat:500293) is 0.1-0.22 µg/ml.

### Purity

> 98 % as determined by SDS-PAGE

### Endotoxin

< 1.0 EU per µg of the protein as determined by the LAL method

### Stability

Samples are stable for up to twelve months from date of receipt at -70°C

### Predicted N terminal

Trp 28

## Molecular Mass

The recombinant human ALCAM consists of 510 amino acids and has a calculated molecular mass of 57.4 kDa. As a result of glycosylation, rh ALCAM migrates as an approximately 60-70 kDa band in SDS-PAGE under reducing conditions.

## Formulation

Lyophilized from sterile PBS, pH 7.4  
1. 5 % trehalose and mannitol are added as protectants before lyophilization.  
2. Please contact us for any concerns or special requirements.

## Usage Guide

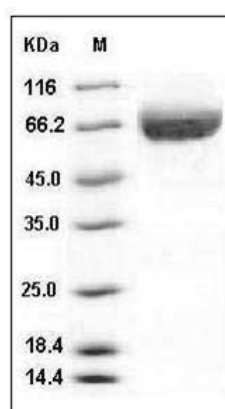
### Storage

Store it under sterile conditions at -20°C to -80°C. It is recommended that the protein be aliquoted for optimal storage. Avoid repeated freeze-thaw cycles.

### Reconstitution

Adding sterile water, prepare a stock solution of 0.25 mg/ml. Concentration is measured by UV-Vis.

## SDS-PAGE



Human ALCAM / CD166 Protein (His Tag) SDS-PAGE