

Anti-NGF Rabbit antibody



Catalog Number: 167471

Product name

Anti-NGF Rabbit antibody

;IHC: 1/50 - 1/100

;IF: 1/50 - 1/100

Specificity

Human, Mouse, Rat

Antibody description

NGF Rabbit polyclonal antibody

Preparation

Antigen: Recombinant protein of human NGF (NP_002497.2).

Formulation

PBS with 0.02% sodium azide, 50% glycerol, pH7.3.

Storage

Store at -20°C . Avoid freeze / thaw cycles.

Clonality

Polyclonal

Ig Type

Rabbit IgG

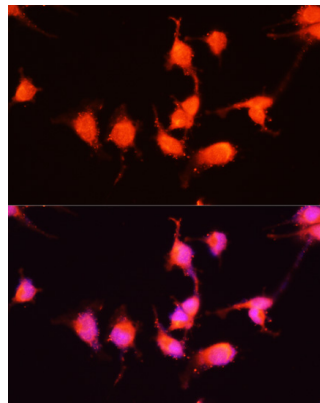
Applications

WB, IHC-P, ICC/IF

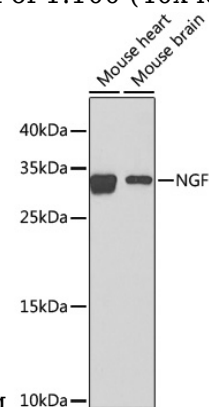
Dilutions

WB: 1/500 - 1/1000

Validations



Immunofluorescence - NGF Polyclonal Antibody. Immunofluorescence analysis of U-251MG cells using NGF antibody at dilution of 1:100 (40x lens).



Blue: DAPI for nuclear staining.

Western blot - NGF Polyclonal Antibody. Western blot analysis of extracts of various cell lines, using NGF antibody at 1:1000 dilution. Secondary antibody: HRP Goat Anti-Rabbit IgG (H+L) at 1:10000 dilution. Lysates/proteins: 25ug per lane. Blocking buffer: 3% nonfat dry milk in TBST. Detection: ECL Enhanced Kit . Exposure time: 60s.