

ATP5A1 antibody

Catalog Number: 107071

Product name

ATP5A1 antibody

Specificity

Human, Mouse, Rat, Monkey; other species not tested.

Antibody description

ATP5A1 Mouse Monoclonal antibody. Positive IHC detected in human heart tissue, human liver tissue. Positive IF detected in Hela cells. Positive FC detected in HeLa cells. Positive WB detected in multi-cells, HeLa cells, MCF7 cells. Positive IP detected in mouse heart tissue. Observed molecular weight by Western-blot: 50 kDa

Preparation

This antibody was obtained by immunization of ATP5A1 recombinant protein (Accession Number: NM_004046). Purification method: Protein A purified.

Formulation

PBS with 0.02% sodium azide and 50% glycerol pH 7.3.

Storage

Store at -20°C. DO NOT ALIQUOT

Clonality

Monoclonal

Ig Type

Mouse IgG2b

Applications

ELISA, IHC, IF, WB, FC, IP

Dilutions

Recommended Dilution:

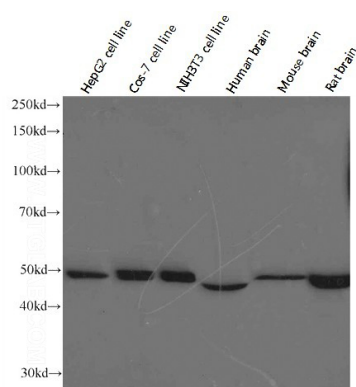
WB: 1:500-1:5000

IP: 1:200-1:2000

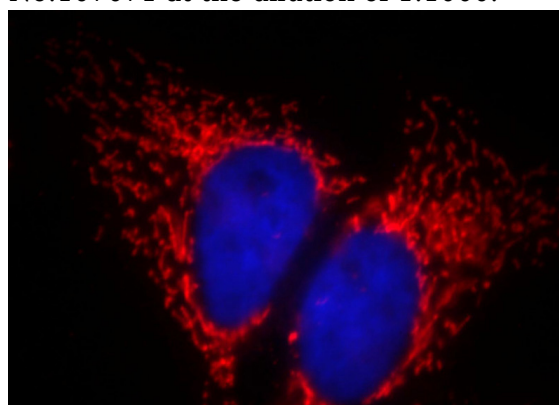
IHC: 1:20-1:200

IF: 1:20-1:200

Validations



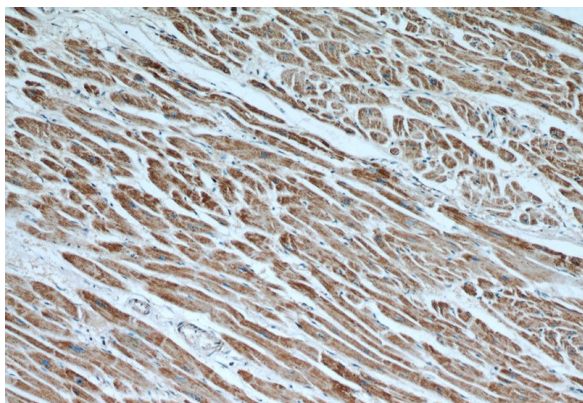
Western blot analysis of ATP5A1 in various tissues and cell lines using Proteintech antibody Catalog No:107071 at the dilution of 1:1000.



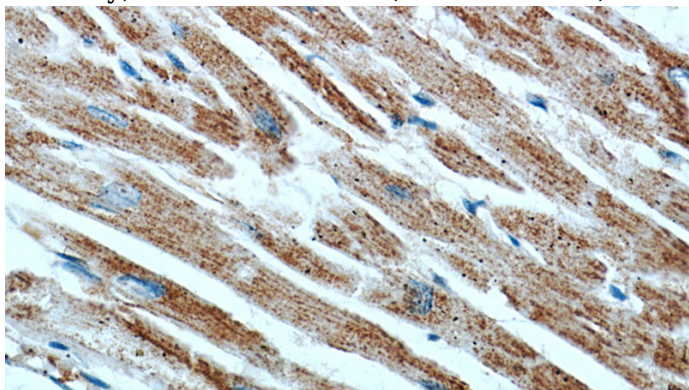
Immunofluorescent analysis of HeLa cells, using ATP5A1 antibody Catalog No: at 1:50 dilution and Rhodamine-labeled goat anti-mouse IgG (red). Blue pseudocolor = DAPI (fluorescent DNA dye).

ATP5A1 antibody

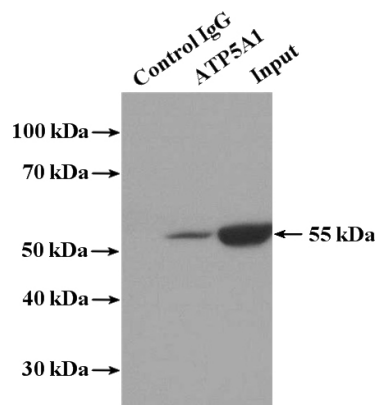
Catalog Number: 107071



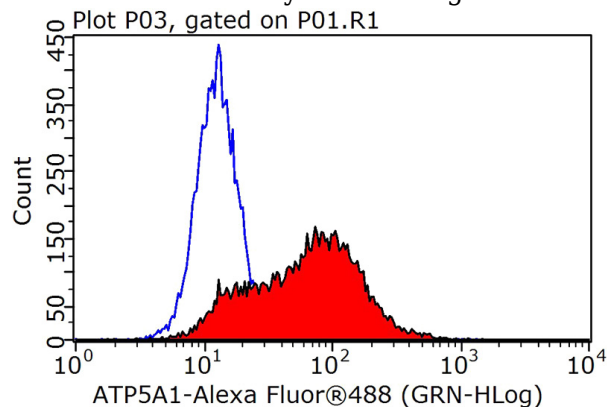
Immunohistochemical of paraffin-embedded human heart using Catalog No:107071(ATP5A1 antibody) at dilution of 1:50 (under 10x lens)



Immunohistochemical of paraffin-embedded human heart using Catalog No:107071(ATP5A1 antibody) at dilution of 1:50 (under 40x lens)



IP Result of anti-ATP5A1 (IP:Catalog No:107071, 5ug; Detection:Catalog No:107071 1:500) with mouse heart tissue lysate 4000ug.



1×10^6 HeLa cells were stained with 0.2ug ATP5A1 antibody (Catalog No:107071, red) and control antibody (blue). Fixed with 90% MeOH blocked with 3% BSA (30 min). Alexa Fluor 488-conjugated AffiniPure Goat Anti-Mouse IgG(H+L) with dilution 1:1000.