

# Anti-TTF1 Rabbit antibody

Catalog Number: 167071

## Product name

Anti-TTF1 Rabbit antibody

## Specificity

Human, Mouse, Rat

## Antibody description

TTF1 Rabbit polyclonal antibody

## Preparation

Antigen: A synthetic peptide of human TTF1

## Formulation

Supplied in 50nM Tris-Glycine(pH 7.4), 0.15M NaCl, 40%Glycerol, 0.01% sodium azide and 0.05% BSA.

## Storage

Store at -20°C. Stable for 12 months from date of receipt.

## Clonality

Polyclonal

## Ig Type

Rabbit IgG

## Applications

WB, IHC-P, ICC/IF, FC

## Dilutions

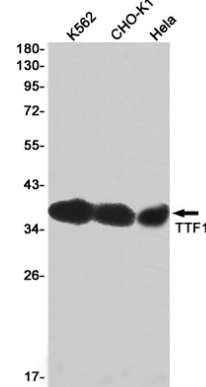
WB: 1/1000

IHC: 1/50

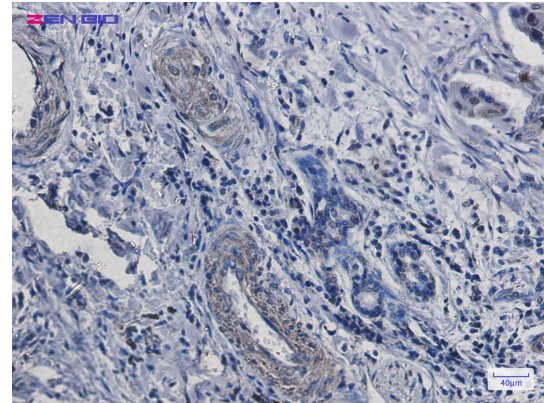
ICC/IF: 1/20-1/50

FC: 1/20

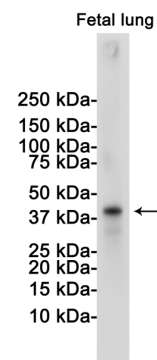
## Validations



Western blot detection of TTF1 in K562,CHO-K1,HeLa cell lysates using TTF1 Rabbit pAb(1:1000 diluted).Predicted band size:39KDa.Observed band size:39KDa.



Immunohistochemistry of TTF1 in paraffin-embedded Human lung cancer tissue using TTF1



Rabbit pAb at dilution 1/50

Western blot detection of TTF1 in Fetal lung lysates using TTF1 Rabbit pAb(1:1000 diluted).Predicted band size:39KDa.Observed band size:39KDa.