

# Human FAM20B/Xylose kinase (Fc Tag) recombinant protein



Catalog Number: 503071

## General Information

### Protein Construction

A DNA sequence encoding the human FAM20B (NP\_055679.1)(Ser31-Leu409) was expressed with the fused Fc region of human IgG1 at the N-terminus.

### Organism

Human

### Expression Host

Human Cells

## QC Testing

### Purity

> 90 % as determined by SDS-PAGE

### Endotoxin

< 1.0 EU per µg of the protein as determined by the LAL method

### Stability

Samples are stable for up to twelve months from date of receipt at -70°C

### Predicted N terminal

Glu

### Molecular Mass

The recombinant human FAM20B/Fc is a disulfide-linked homodimer. The reduced monomer comprises 639 amino acids and has a predicted

molecular mass of 71.4 kDa. The apparent molecular mass of the protein is approximately 72.2 kDa in SDS-PAGE under reducing conditions due to glycosylation.

### Formulation

Lyophilized from sterile PBS, pH 7.4.

1. 5 % trehalose and mannitol are added as protectants before lyophilization.

2. Please contact us for any concerns or special requirements.

## Usage Guide

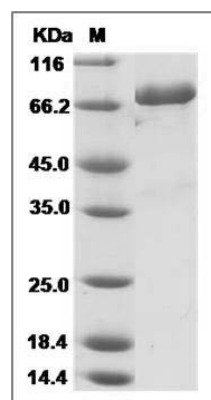
### Storage

Store it under sterile conditions at -20°C to -80°C. It is recommended that the protein be aliquoted for optimal storage. Avoid repeated freeze-thaw cycles.

### Reconstitution

Adding sterile water, prepare a stock solution of 0.25 mg/ml. Concentration is measured by UV-Vis.

### SDS-PAGE



Human FAM20B / Gxk1 Protein (Fc Tag) SDS-PAGE