

KISS1 antibody

Catalog Number: 112071

Product name

KISS1 antibody

IHC: 1:20-1:200

IF: 1:20-1:200

Specificity

Human, Mouse; other species not tested.

Antibody description

KISS1 Rabbit Polyclonal antibody. Positive WB detected in NIH/3T3 cells, human placenta tissue, mouse brain tissue. Positive IF detected in NIH/3T3 cells. Positive IHC detected in human lung cancer tissue. Observed molecular weight by Western-blot: 16-20 kDa

Preparation

This antibody was obtained by immunization of KISS1 recombinant protein (Accession Number: NM_002256). Purification method: Antigen affinity purified.

Formulation

PBS with 0.1% sodium azide and 50% glycerol pH 7.3.

Storage

Store at -20°C. DO NOT ALIQUOT

Clonality

Polyclonal

Ig Type

Rabbit IgG

Applications

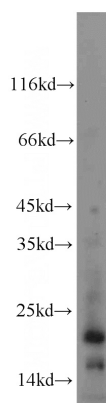
ELISA, WB, IHC, IF

Dilutions

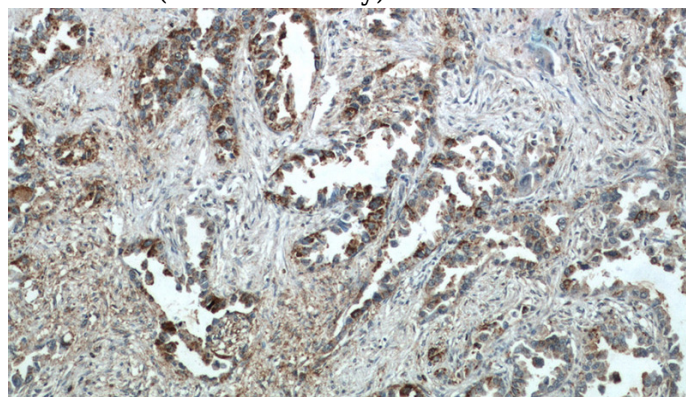
Recommended Dilution:

WB: 1:200-1:1000

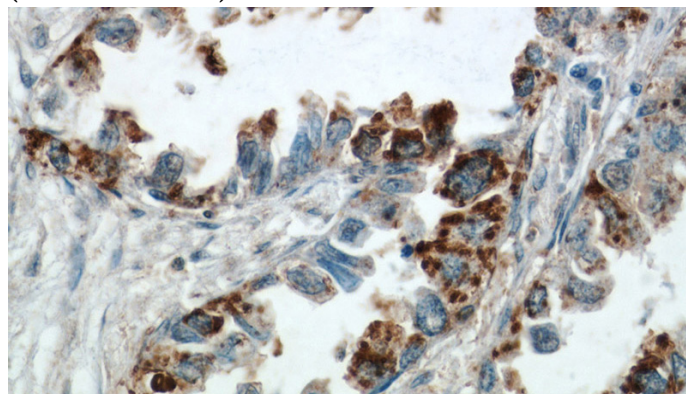
Validations



NIH/3T3 cells were subjected to SDS PAGE followed by western blot with Catalog No:112071(KISS1 antibody) at dilution of 1:500



Immunohistochemical of paraffin-embedded human lung cancer using Catalog No:112071(KISS1 antibody) at dilution of 1:50 (under 10x lens)

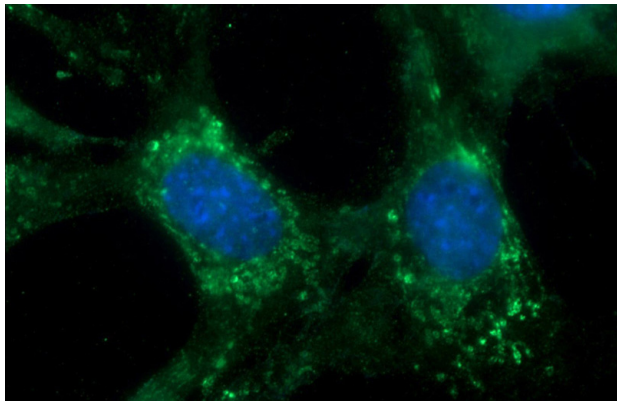


Immunohistochemical of paraffin-embedded

KISS1 antibody

Catalog Number: 112071

human lung cancer using Catalog
No:112071(KISS1 antibody) at dilution of 1:50
(under 40x lens)



Immunofluorescent analysis of NIH/3T3 cells
using Catalog No:112071(KISS1 Antibody) at
dilution of 1:50 and Alexa Fluor 488-conjugated
AffiniPure Goat Anti-Rabbit IgG(H+L)