

Anti-Poliovirus Receptor/PVR Rabbit antibody



Catalog Number: 167761

Product name

Rabbit IgG

Anti-Poliovirus Receptor/PVR Rabbit antibody

Applications

Specificity

WB, IHC-P, FC

Human

Dilutions

Antibody description

WB: 1/1000

Poliovirus Receptor/PVR Rabbit monoclonal antibody

IHC: 1/50

FC: 1/20

Preparation

Antigen: Recombinant protein of human Poliovirus Receptor/PVR

Validations

Formulation

50nM Tris-Glycine(pH 7.4), 0.15M NaCl, 40%Glycerol, 0.01% sodium azide and 0.05% BSA

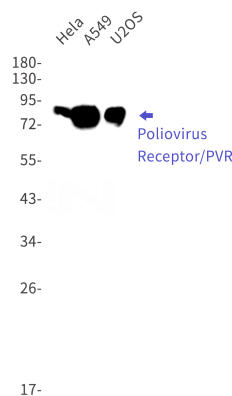
Storage

Store at 4°C short term. Store at -20°C long term. Avoid freeze / thaw cycle.

Clonality

Monoclonal

Ig Type



Western blot detection of Poliovirus Receptor/PVR in HeLa, A549, U2OS cell lysates using Poliovirus Receptor/PVR Rabbit mAb(1:1000 diluted). Predicted band size: 45kDa. Observed band size: 60-80kDa.