

IMPA1 antibody

Catalog Number: 111761

Product name

IMPA1 antibody

IHC: 1:20-1:200

IF: 1:10-1:100

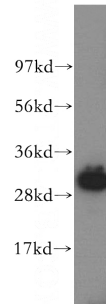
Specificity

Human, Mouse, Rat; other species not tested.

Validations

Antibody description

IMPA1 Rabbit Polyclonal antibody. Positive WB detected in human kidney tissue, human brain tissue. Positive IF detected in HepG2 cells. Positive IHC detected in human brain tissue. Observed molecular weight by Western-blot: 30kd



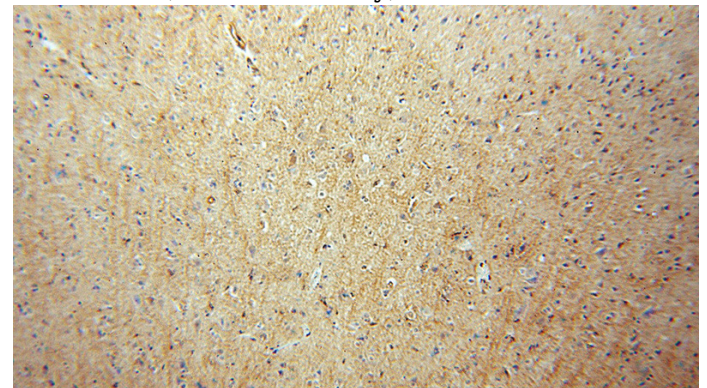
Preparation

This antibody was obtained by immunization of IMPA1 recombinant protein (Accession Number: NM_005536). Purification method: Antigen affinity purified.

human kidney tissue were subjected to SDS PAGE followed by western blot with Catalog No:111761(IMPA1 antibody) at dilution of 1:300

Formulation

PBS with 0.02% sodium azide and 50% glycerol pH 7.3.



Storage

Store at -20°C. DO NOT ALIQUOT

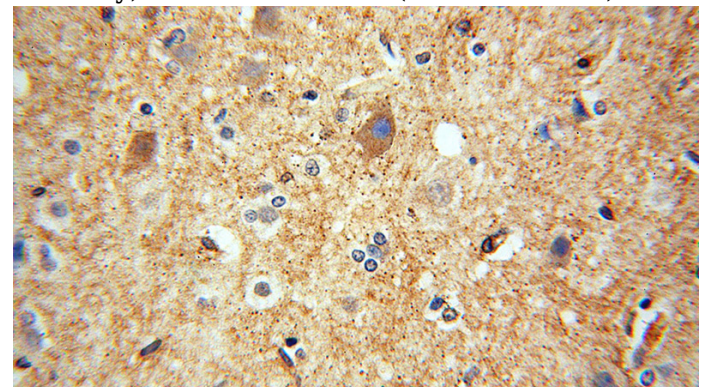
Clonality

Polyclonal

Immunohistochemical of paraffin-embedded human brain using Catalog No:111761(IMPA1 antibody) at dilution of 1:50 (under 10x lens)

Ig Type

Rabbit IgG



Applications

ELISA, WB, IHC, IF

Dilutions

Recommended Dilution:

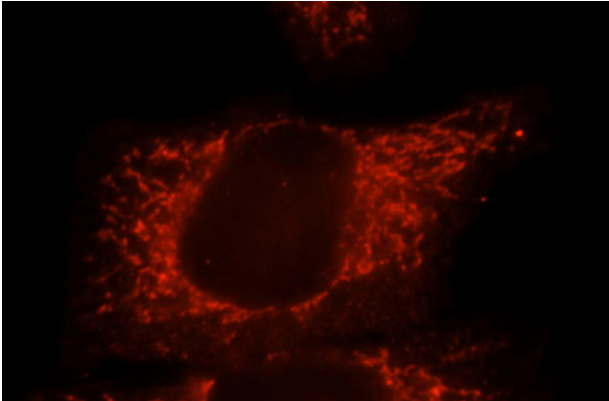
WB: 1:500-1:5000

Immunohistochemical of paraffin-embedded human brain using Catalog No:111761(IMPA1 antibody) at dilution of 1:50 (under 10x lens)

IMPA1 antibody

Catalog Number: 111761

antibody) at dilution of 1:50 (under 40x lens)



Immunofluorescent analysis of HepG2 cells, using IMPA1 antibody Catalog No:111761 at 1:25 dilution and Rhodamine-labeled goat anti-rabbit IgG (red).