

# C14orf166 antibody



Catalog Number: 108661

## Product name

C14orf166 antibody

## Immunogen

[Human CLE; C14orf166 Recombinant protein \(GST tag\)](#)

## Specificity

Human, Mouse, Rat; other species not tested.

## Antibody description

C14orf166 Rabbit Polyclonal antibody. Positive IHC detected in human heart tissue, human liver tissue, human skeletal muscle tissue. Positive IF detected in HepG2 cells. Positive IP detected in Jurkat cells. Positive WB detected in mouse thymus tissue, human heart tissue, Jurkat cells, mouse heart tissue, mouse lung tissue, mouse pancreas tissue. Observed molecular weight by Western-blot: 28kd

## Preparation

This antibody was obtained by immunization of C14orf166 recombinant protein (Accession Number: NM\_016039). Purification method: Antigen affinity purified.

## Formulation

PBS with 0.02% sodium azide and 50% glycerol pH 7.3.

## Storage

Store at -20°C. DO NOT ALIQUOT

## Clonality

Polyclonal

## Ig Type

Rabbit IgG

## Applications

ELISA, IHC, IF, WB, IP

## Dilutions

Recommended Dilution:

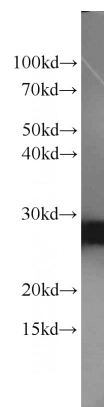
WB: 1:500-1:5000

IP: 1:200-1:2000

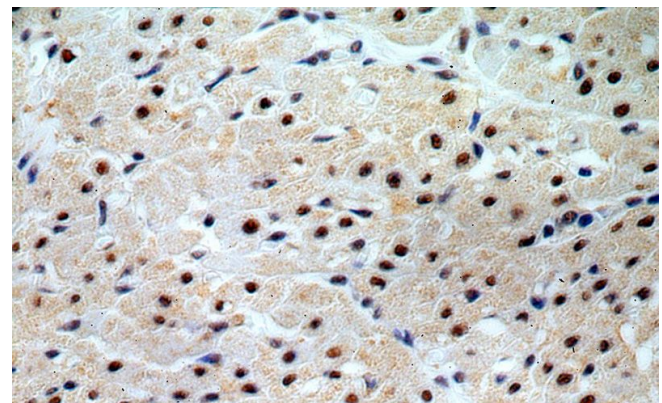
IHC: 1:20-1:200

IF: 1:20-1:200

## Validations



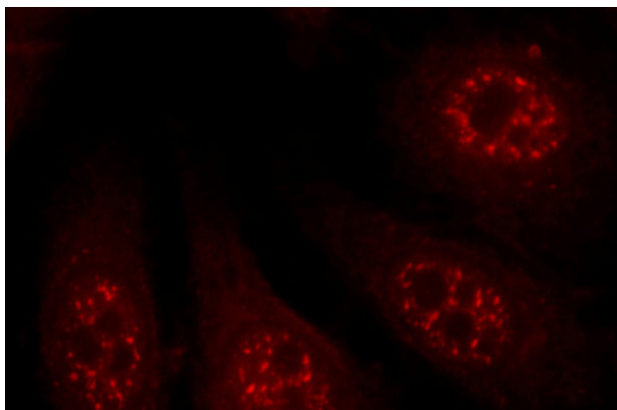
mouse thymus tissue were subjected to SDS PAGE followed by western blot with Catalog No:108661(CLE; C14orf166 antibody) at dilution of 1:1000



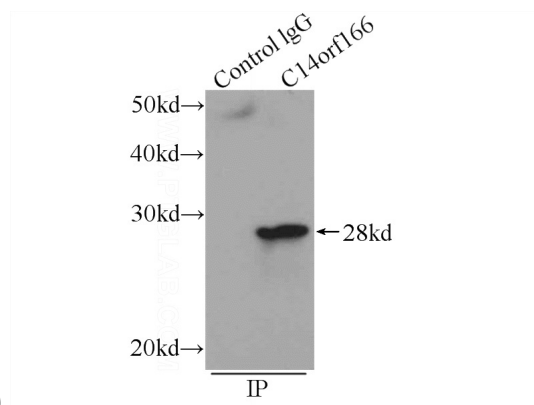
Immunohistochemical of paraffin-embedded human heart using Catalog No:108661(CLE; C14orf166 antibody) at dilution of 1:100 (under 40x lens)

# C14orf166 antibody

Catalog Number: 108661



Immunofluorescent analysis of HepG2 cells, using C14orf166 antibody Catalog No:108661 at 1:50 dilution and Rhodamine-labeled goat anti-rabbit



IgG (red).

IP Result of anti-CLE; C14orf166 (IP:Catalog No:108661, 3ug; Detection:Catalog No:108661 1:700) with Jurkat cells lysate 1080ug.