

Anti-PLK1/PLK-1 antibody



Catalog Number: 105661

Product name

Anti-PLK1/PLK-1 antibody

Specificity

Human PLK1 / PLK-1

Antibody description

Rabbit polyclonal to PLK1/PLK-1

Preparation

Produced in rabbits immunized with a synthetic peptide corresponding to the center region of the Human PLK1 / PLK-1, and purified by antigen affinity chromatography.

Formulation

0.2 μm filtered solution in PBS

Storage

This antibody can be stored at 2°C-8°C for one month without detectable loss of activity. Antibody products are stable for twelve months from date of receipt when stored at -20°C to -80°C.

Preservative-Free.

Sodium azide is recommended to avoid contamination (final concentration 0.05%-0.1%). It is toxic to cells and should be disposed of properly. Avoid repeated freeze-thaw cycles.

Clonality

Polyclonal

Ig Type

Rabbit IgG

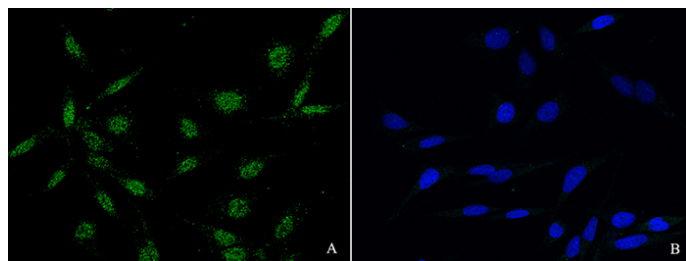
Applications

IF, ICC/IF

Dilutions

ICC/IF: 0.5-1.5 $\mu\text{g}/\text{mL}$

Validations



PLK1 / PLK-1 Antibody, Rabbit PAb, Antigen Affinity Purified, Immunofluorescence

Immunofluorescence staining of PLK1 in HeLa cells. Cells were fixed with 4% PFA, blocked with 10% serum. Then incubated with rabbit anti-human PLK1 polyclonal antibody (1 $\mu\text{g}/\text{ml}$) (Figure A), incubated with rabbit anti-human PLK1 polyclonal antibody and antigen (Figure B) at 4°C overnight. Then cells were stained with the Alexa Fluor®488-conjugated Goat Anti-rabbit IgG secondary antibody (green) and counterstained with DAPI (blue). Positive staining was localized to nucleus.