

# Cynomolgus E-Selectin/CD62e/SELE (Fc Tag) recombinant protein



Catalog Number: 503661

## General Information

### Protein Construction

A DNA sequence encoding the cynomolgus SELE (EHH61734.1) (Met1-Pro556) was expressed with the Fc region of human IgG1 at the C-terminus.

### Organism

Cynomolgus

### Expression Host

Human Cells

## QC Testing

### Activity

Measured by the ability of the immobilized protein to support the adhesion of U937 human histiocytic lymphoma cells.

When  $5 \times 10^4$  cells/well are added to Cynomolgus/Rhesus SELP/Fc Chimera coated plates (2  $\mu\text{g}/\text{mL}$  with 100  $\mu\text{L}/\text{well}$ ), > 40% cells will adhere for 1 hour incubation at 37°C.

### Purity

> 90 % as determined by SDS-PAGE.

### Endotoxin

< 1.0 EU per  $\mu\text{g}$  protein as determined by the LAL method.

### Stability

Samples are stable for up to twelve months from date of receipt at -70°C

### Predicted N terminal

Trp 22

## Molecular Mass

The recombinant cynomolgus SELE consists 776 amino acids and predicts a molecular mass of 85.7 kDa.

## Formulation

Lyophilized from sterile PBS, pH 7.4.

1. 5 % trehalose and mannitol are added as protectants before lyophilization.
2. Please contact us for any concerns or special requirements.

## Usage Guide

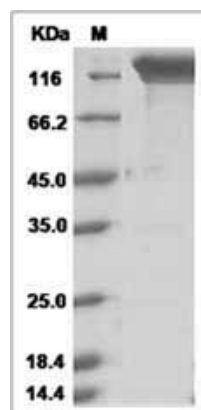
### Storage

Store it under sterile conditions at -20°C to -80°C. It is recommended that the protein be aliquoted for optimal storage. Avoid repeated freeze-thaw cycles.

### Reconstitution

Adding sterile water, prepare a stock solution of 0.25 mg/ml. Concentration is measured by UV-Vis.

### SDS-PAGE



Cynomolgus E-Selectin / CD62e / SELE Protein (Fc Tag)