

# PTCD3 antibody



Catalog Number: 114261

## Product name

PTCD3 antibody

Recommended Dilution:

WB: 1:200-1:2000

## Immunogen

IP: 1:200-1:2000

[Human PTCD3 Recombinant protein \(His tag\)](#)

IF: 1:20-1:200

## Specificity

Human, Mouse, Rat; other species not tested.

## Antibody description

PTCD3 Rabbit Polyclonal antibody. Positive WB detected in mouse embryo tissue, HEK-293 cells, rat heart tissue, rat kidney tissue. Positive IP detected in HEK-293 cells. Positive IF detected in HEK-293 cells. Observed molecular weight by Western-blot: 78-80 kDa

## Preparation

This antibody was obtained by immunization of PTCD3 recombinant protein (Accession Number: NM\_017952). Purification method: Antigen affinity purified.

## Formulation

PBS with 0.1% sodium azide and 50% glycerol pH 7.3.

## Storage

Store at -20°C. DO NOT ALIQUOT

## Clonality

Polyclonal

## Ig Type

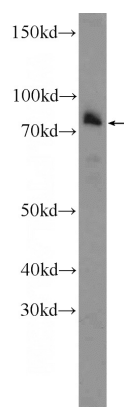
Rabbit IgG

## Applications

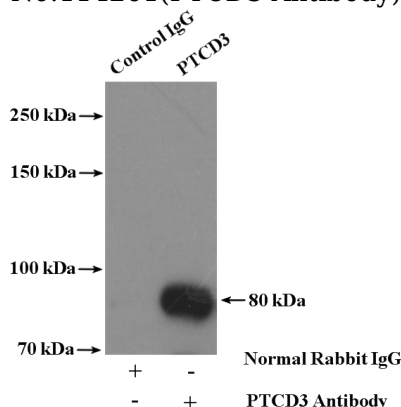
ELISA, WB, IF, IP

## Dilutions

## Validations



mouse embryo tissue were subjected to SDS PAGE followed by western blot with Catalog No:114261(PTCD3 Antibody) at dilution of 1:600



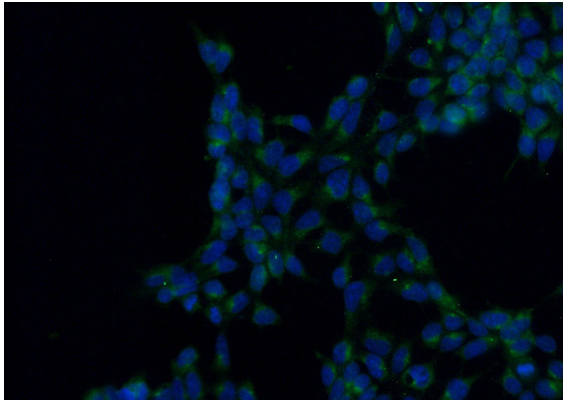
IP Result of anti-PTCD3 (IP:Catalog No:114261, 4ug; Detection:Catalog No:114261 1:600) with HEK-293 cells lysate 3600ug.

# PTCD3 antibody



Catalog Number: 114261

---



Immunofluorescent analysis of (-20oc Ethanol)  
fixed HEK-293 cells using Catalog  
No:114261(PTCD3 Antibody) at dilution of 1:50  
and Alexa Fluor 488-conjugated AffiniPure Goat  
Anti-Rabbit IgG(H+L)