

# ALDH1A3 antibody



Catalog Number: 107961

## Product name

ALDH1A3 antibody

IHC: 1:20-1:200

IF: 1:20-1:200

## Specificity

Human, Mouse; other species not tested.

## Antibody description

ALDH1A3 Rabbit Polyclonal antibody. Positive IHC detected in human liver cancer tissue. Positive IF detected in HepG2 cells. Positive WB detected in mouse liver tissue, HepG2 cells, L02 cells, mouse kidney tissue. Observed molecular weight by Western-blot: 50 kDa

## Preparation

This antibody was obtained by immunization of ALDH1A3 recombinant protein (Accession Number: NM\_000693). Purification method: Antigen affinity purified.

## Formulation

PBS with 0.1% sodium azide and 50% glycerol pH 7.3.

## Storage

Store at -20°C. DO NOT ALIQUOT

## Clonality

Polyclonal

## Ig Type

Rabbit IgG

## Applications

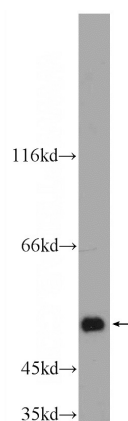
ELISA, WB, IHC, IF

## Dilutions

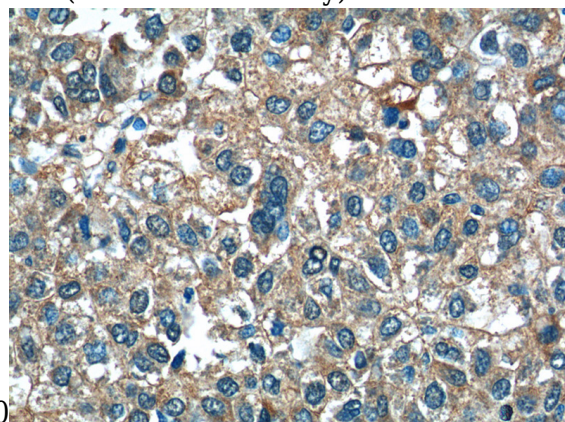
Recommended Dilution:

WB: 1:500-1:5000

## Validations

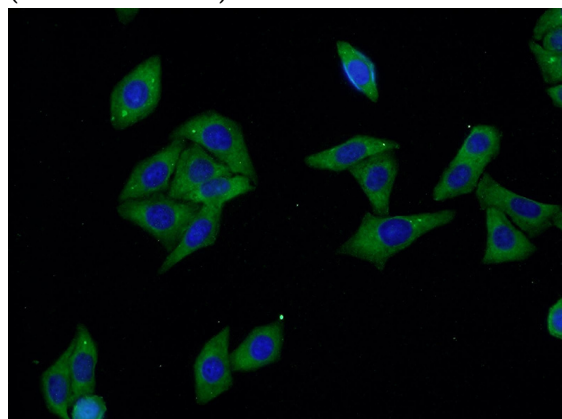


mouse liver tissue were subjected to SDS PAGE followed by western blot with Catalog No:107961(ALDH1A3 Antibody) at dilution of



1:1000

Immunohistochemistry of paraffin-embedded human liver cancer tissue slide using Catalog No:107961(ALDH1A3 Antibody) at dilution of 1:50 (under 40x lens)



# ALDH1A3 antibody



Catalog Number: 107961

---

Immunofluorescent analysis of HepG2 cells using  
Catalog No:107961(ALDH1A3 Antibody) at

dilution of 1:50 and Alexa Fluor 488-conjugated  
AffiniPure Goat Anti-Rabbit IgG(H+L)