

Anti-CDKN2A/p16INK4a Rabbit antibody



Catalog Number: 166961

Product name

Anti-CDKN2A/p16INK4a Rabbit antibody

WB: 1/500 - 1/2000

IF: 1/50 - 1/200

Specificity

Human, Mouse, Rat

Antibody description

CDKN2A/p16INK4a Rabbit polyclonal antibody

Preparation

Antigen: A synthetic peptide corresponding to a sequence within amino acids 20 to the C-terminus of human CDKN2A / p16INK4a.NCADPATLTRPVHDAAREGFLDTLVVLRAGARLDVRDAWGRLPVDLAEELGHRDVARYLR AAAGGTRGSNHARIDAAEGPSDIPD

Formulation

PBS with 0.02% sodium azide,50% glycerol,pH7.3.

Storage

Store at -20°C . Avoid freeze / thaw cycles.

Clonality

Polyclonal

Ig Type

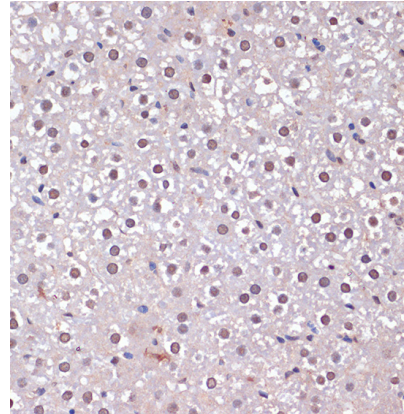
Rabbit IgG

Applications

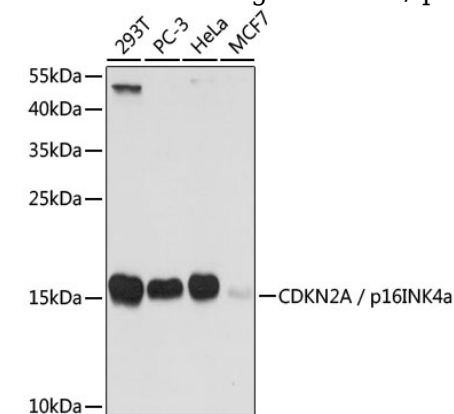
WB, IHC-P

Dilutions

Validations



Immunofluorescence - CDKN2A / p16INK4a Polyclonal Antibody. Immunofluorescence analysis of A549 cells using CDKN2A / p16INK4a antibody



Western blot - CDKN2A / p16INK4a Polyclonal Antibody. Western blot analysis of extracts of various cell lines, using CDKN2A / p16INK4a antibody at 1:1000 dilution.Secondary antibody: HRP Goat Anti-Rabbit IgG at 1:10000 dilution.Lysates/proteins: 25ug per lane.Blocking buffer: 3% nonfat dry milk in TBST.Exposure time: 15s.