

TRPA1 Polyclonal Antibody



Catalog Number: 165961

Product name

TRPA1 Polyclonal Antibody

Specificity

Human, Mouse, Rat

Antibody description

Polyclonal antibody to TRPA1

Preparation

Antigen: A synthetic peptide corresponding to a sequence within amino acids 850-950 of human TRPA1 (NP_015628.2).

Formulation

PBS with 0.02% sodium azide, 50% glycerol, pH7.3.

Storage

Store at -20°C. Avoid freeze / thaw cycles.

Clonality

Polyclonal

Ig Type

Rabbit IgG

Applications

WB, IHC, IF

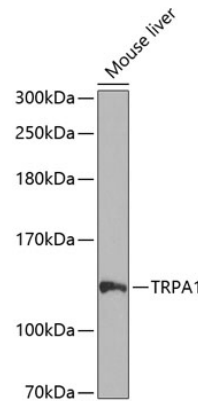
Dilutions

WB 1:500 - 1:2000

IHC 1:50 - 1:200

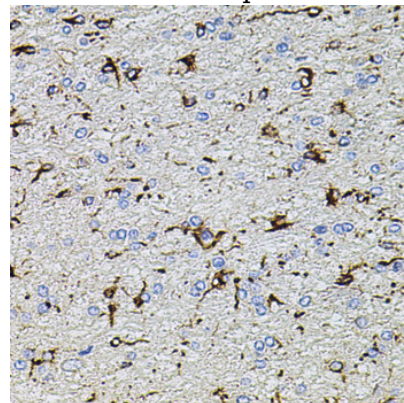
IF 1:50 - 1:200

Validations



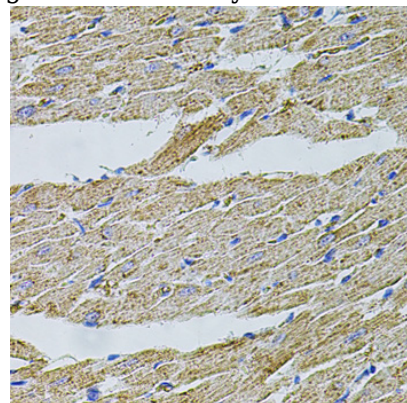
Western blot - TRPA1 Polyclonal Antibody

Western blot analysis of extracts of mouse liver, using TRPA1 antibody at 1:1000 dilution. Secondary antibody: HRP Goat Anti-Rabbit IgG (H+L) at 1:10000 dilution. Lysates/proteins: 25ug per lane. Blocking buffer: 3% nonfat dry milk in TBST. Detection: ECL Enhanced Kit. Exposure time: 90s.



Immunohistochemistry - TRPA1 Polyclonal Antibody

Immunohistochemistry of paraffin-embedded rat brain using TRPA1 antibody at dilution of 1:100

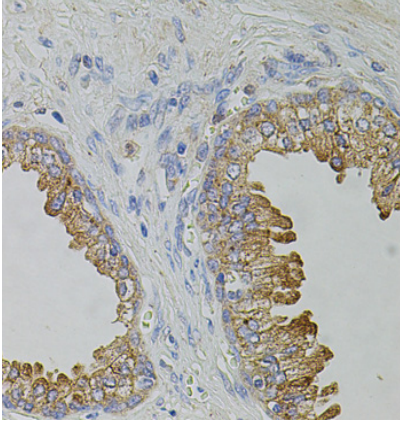


TRPA1 Polyclonal Antibody

Catalog Number: 165961

Immunohistochemistry - TRPA1 Polyclonal Antibody

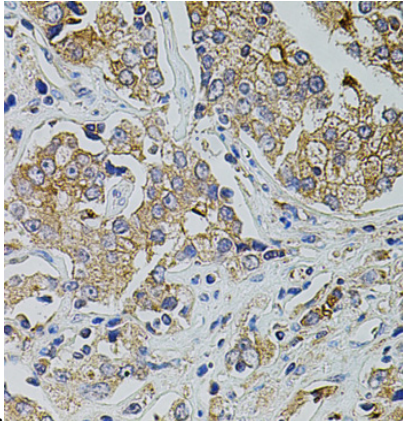
Immunohistochemistry of paraffin-embedded rat heart using TRPA1 antibody at dilution of 1:100



(40x lens).

Immunohistochemistry - TRPA1 Polyclonal Antibody

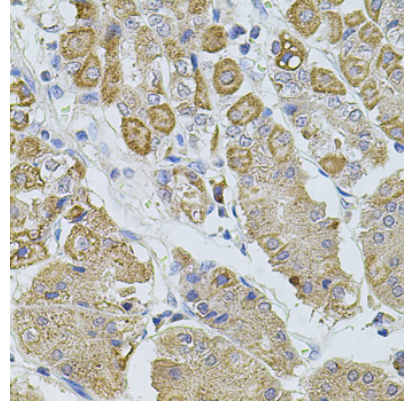
Immunohistochemistry of paraffin-embedded human prostate using TRPA1 antibody at dilution



of 1:100 (40x lens).

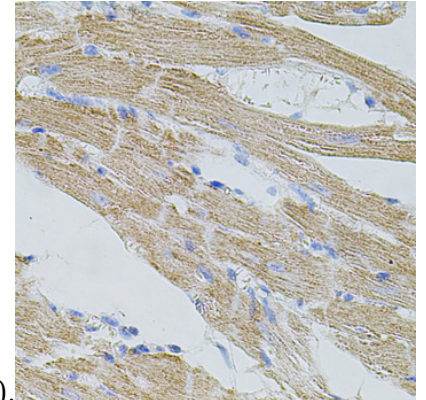
Immunohistochemistry - TRPA1 Polyclonal Antibody

Immunohistochemistry of paraffin-embedded human prostate cancer using TRPA1 antibody at dilution of 1:100 (40x lens).



Immunohistochemistry - TRPA1 Polyclonal Antibody

Immunohistochemistry of paraffin-embedded human stomach using TRPA1 antibody at dilution



of 1:100 (40x lens).

Immunohistochemistry - TRPA1 Polyclonal Antibody

Immunohistochemistry of paraffin-embedded mouse heart using TRPA1 antibody at dilution of 1:100 (40x lens).