

S100A4 antibody



Catalog Number: 114961

Product name

S100A4 antibody

Specificity

Human, Mouse; other species not tested.

Antibody description

S100A4 Rabbit Polyclonal antibody. Positive WB detected in HeLa cells, NIH/3T3 cells. Positive IHC detected in human breast cancer tissue, human colon cancer tissue, human pancreas cancer tissue. Observed molecular weight by Western-blot: 10-12 kDa

Preparation

This antibody was obtained by immunization of S100A4 recombinant protein (Accession Number: NM_002961). Purification method: Antigen affinity purified.

Formulation

PBS with 0.1% sodium azide and 50% glycerol pH 7.3.

Storage

Store at -20°C. DO NOT ALIQUOT

Clonality

Polyclonal

Ig Type

Rabbit IgG

Applications

ELISA, WB, IHC

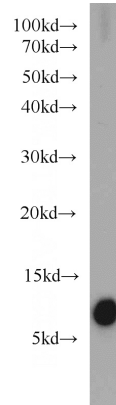
Dilutions

Recommended Dilution:

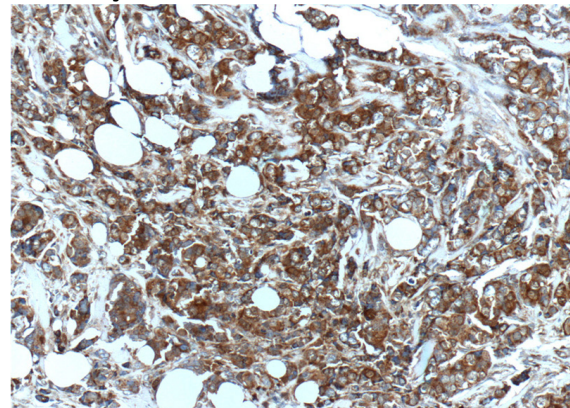
WB: 1:200-1:2000

IHC: 1:50-1:500

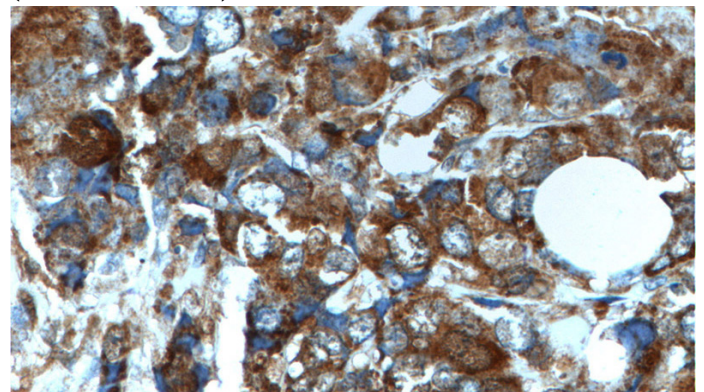
Validations



HeLa cells were subjected to SDS PAGE followed by western blot with Catalog No:114961(S100A4 antibody) at dilution of 1:500



Immunohistochemistry of paraffin-embedded human breast cancer tissue slide using Catalog No:114961(S100A4 Antibody) at dilution of 1:200 (under 10x lens).



Immunohistochemistry of paraffin-embedded human breast cancer tissue slide using Catalog No:114961(S100A4 Antibody) at dilution of 1:200

S100A4 antibody



Catalog Number: 114961

(under 40x lens).