

# Anti-CTLA-4/CD152 antibody



Catalog Number: 101561

## Product name

Anti-CTLA-4/CD152 antibody

## Immunogen

[Human CTLA-4/CD152 \(His Tag\) recombinant protein](#)

## Specificity

Human CTLA-4 / CD152

## Antibody description

Rabbit polyclonal to CTLA-4/CD152

## Preparation

Produced in rabbits immunized with purified, recombinant Human CTLA-4 / CD152 (rh CTLA-4 / CD152; NP\_005205.2; Met1-Phe162). CTLA-4 / CD152 specific IgG was purified by Human CTLA-4 / CD152 affinity chromatography.

## Formulation

0.2 µm filtered solution in PBS

## Storage

This antibody can be stored at 2°C-8°C for one month without detectable loss of activity. Antibody products are stable for twelve months from date of receipt when stored at -20°C to -80°C.

Preservative-Free.

Sodium azide is recommended to avoid contamination (final concentration 0.05%-0.1%). It is toxic to cells and should be disposed of properly. Avoid repeated freeze-thaw cycles.

## Clonality

Polyclonal

## Ig Type

Rabbit IgG

## Applications

ELISA, WB

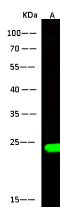
## Dilutions

WB: 1-10 µg/ml

ELISA: 0.1-0.2 µg/ml

This antibody can be used at 0.1-0.2 µg/ml with the appropriate secondary reagents to detect Human CTLA-4 / CD152. The detection limit for Human CTLA-4 / CD152 is approximately 0.00245 ng/well.

## Validations



Items	Lanes
Sample (Membrane lysate)	A
Sample Volume (µg/lane)	MOLT4
Sample Volume (µg/lane)	30
Gel	13% SDS-PAGE reducing gel
Recommended concentration	1-10 µg/ml
Secondary Antibody	Dylight 800-labeled Antibody to Rabbit IgG (H+L), at 1:5000 dilution.
Developed using Odyssey imaging system.	
Explanation	Predicted band size : 25 kDa Observed band size : 23 kDa

CTLA-4 / CD152 Antibody, Rabbit PAb, Antigen Affinity Purified, Western blot