

Mouse EphB6/Eph Receptor B6 (His Tag) recombinant protein



Catalog Number: 500561

General Information

Gene Name Synonym

MEP; Tyrosine-protein kinase-defective receptor
EPH-6

Protein Construction

A DNA sequence encoding the mouse EPHB6
(O08644-1) (Met1-Ser587) was expressed with a
C-terminal polyhistidine tag.

Organism

Mouse

Expression Host

Human Cells

QC Testing

Activity

1. Immobilized mouse EPHB6-His at 10 µg/ml (100
µl/well) can bind mouse EFNB1-Fc (Cat:503291),
The EC₅₀ of mouse EFNB1-Fc (Cat:503291) is
0.12-0.28 µg/ml.

2. Immobilized mouse EPHB6-His at 10 µg/ml (100
µl/well) can bind mouse EFNB2-Fc (Cat:504064),
The EC₅₀ of mouse EFNB2-Fc (Cat:504064) is
0.04-0.08 µg/ml.

Purity

(16.4+73.1) % as determined by SDS-PAGE

Endotoxin

< 1.0 EU per µg of the protein as determined by
the LAL method

Stability

Samples are stable for up to twelve months from
date of receipt at -70°C

Predicted N terminal

Leu 33

Molecular Mass

The recombinant mouse EPHB6 comprises 566
amino acids and has a predicted molecular mass
of 61.1 kDa. The apparent molecular mass of the
protein is approximately 91 and 65 kDa in SDS-
PAGE under reducing conditions.

Formulation

Lyophilized from sterile PBS, pH 7.4.

1. 5 % trehalose and mannitol are added as
protectants before lyophilization.

2. Please contact us for any concerns or special
requirements.

Usage Guide

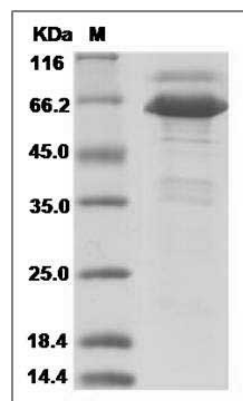
Storage

Store it under sterile conditions at -20°C to -80°C.
It is recommended that the protein be aliquoted
for optimal storage. Avoid repeated freeze-thaw
cycles.

Reconstitution

Adding sterile water, prepare a stock solution of
0.25 mg/ml. Concentration is measured by UV-Vis.

SDS-PAGE



Mouse EphB6 Protein (His Tag) SDS-PAGE