

Anti-Ripk3 antibody

Catalog Number: 175161

Product name

Anti-Ripk3 antibody

Specificity

Mouse, Rat

Antibody description

Rabbit polyclonal antibody to Ripk3

Preparation

This antigen of this antibody was synthetic peptide within mouse rip3 aa 440-486 / 486.

Formulation

Liquid, 1*PBS (pH7.4), 0.2% BSA, 50% Glycerol.
Preservative: 0.05% Sodium Azide.

Storage

Store at +4°C after thawing. Aliquot store at -20°C. Avoid repeated freeze / thaw cycles.

Clonality

Polyclonal

Ig Type

Rabbit IgG

Applications

WB

Dilutions

WB: 1:500-1:1,000

Validations

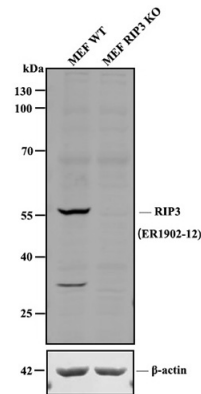


Fig1.; All lanes: Western blot analysis of RIP3 with anti-RIP3 antibody at 1:1,000 dilution.; Lane 1: Wild-type MEF whole cell lysate (20 µg).; Lane 2: RIP3 knockout MEF whole cell lysate (20 µg).; 175161# was shown to specifically react with RIP3 in wild-type MEF cells. No band was observed when RIP3 knockout sample was tested. Wild-type and RIP3 knockout samples were subjected to SDS-PAGE. Proteins were transferred to a PVDF membrane and blocked with 5% NFDM in TBST for 1 hour at room temperature. The primary antibody (1/1,000) and Loading control antibody (Rabbit anti-β-actin, R1207-1, 1/1,000) was used in 5% BSA at room temperature for 2 hours. Goat Anti-Rabbit IgG-HRP Secondary Antibody (HA1001) at 1:200,000 dilution was used for 1 hour at room temperature.