

# SCO2 Polyclonal Antibody

Catalog Number: 165161

## Product name

SCO2 Polyclonal Antibody

## Specificity

Human, Mouse, Rat

## Antibody description

Polyclonal antibody to SCO2

## Preparation

Antigen: Recombinant fusion protein containing a sequence corresponding to amino acids 1-130 of human SCO2 (NP\_001162582.1).

## Formulation

PBS with 0.02% sodium azide, 50% glycerol, pH7.3.

## Storage

Store at -20°C. Avoid freeze / thaw cycles.

## Clonality

Polyclonal

## Ig Type

Rabbit IgG

## Applications

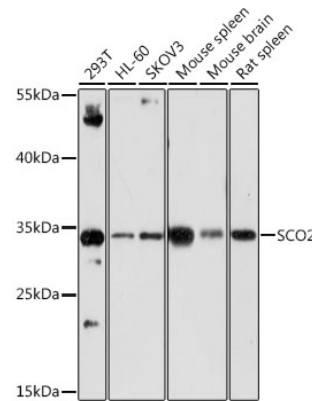
WB, IHC

## Dilutions

WB 1:500 - 1:2000

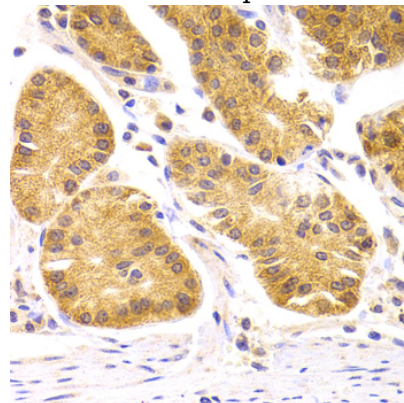
IHC 1:50 - 1:200

## Validations



Western blot - SCO2 Polyclonal Antibody

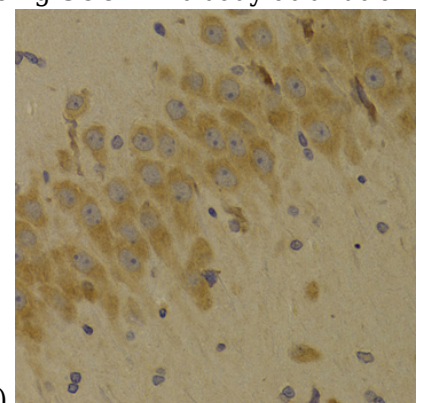
Western blot analysis of extracts of various cell lines, using SCO2 antibody at 1:1000 dilution. Secondary antibody: HRP Goat Anti-Rabbit IgG (H+L) at 1:10000 dilution. Lysates/proteins: 25ug per lane. Blocking buffer: 3% nonfat dry milk in TBST. Detection: ECL Enhanced Kit. Exposure time: 3min.



Immunohistochemistry - SCO2 Polyclonal Antibody

Immunohistochemistry of paraffin-embedded human stomach using SCO2 Antibody at dilution

of 1:100 (40x lens).



# SCO2 Polyclonal Antibody



Catalog Number: 165161

---

Immunohistochemistry - SCO2 Polyclonal Antibody

Immunohistochemistry of paraffin-embedded rat brain using SCO2 Antibody at dilution of 1:100 (40x lens).