

# Human Ephrin-B1/EFNB1 (His & Fc Tag) recombinant protein



Catalog Number: 504161

## General Information

### Gene Name Synonym

EFL-3; ELK ligand; EPH-related receptor tyrosine kinase ligand 2

### Protein Construction

A DNA sequence encoding the human EFNB1 (NP\_004420.1) extracellular domain (Met 1-Gly 232) was fused with the C-terminal polyhistidine-tagged Fc region of human IgG1 at the C-terminus.

### Organism

Human

### Expression Host

Human Cells

## QC Testing

### Activity

Measured by its binding ability in a functional ELISA. Immobilized mouse EphB3 at 2 µg/ml (100 µl/well) can bind human EFNB1 Fc chimera with a linear ranger of 1.56-25 ng/ml.

### Purity

> (79.7+18.0) % as determined by SDS-PAGE

### Endotoxin

< 1.0 EU per µg of the protein as determined by the LAL method

### Stability

Samples are stable for up to twelve months from date of receipt at -70°C

### Predicted N terminal

Leu 28

## Molecular Mass

The recombinant human EFNB1/Fc chimera is a disulfide-linked homodimeric protein. The reduced monomer consists of 458 amino acids and predicts a molecular mass of 51.2 KDa. In SDS-PAGE under reducing conditions, the apparent molecular mass of the protein is approximately 64 and 36 KDa due to glycosylation.

## Formulation

Lyophilized from sterile PBS, pH 7.4

1. 5 % trehalose and mannitol are added as protectants before lyophilization.
2. Please contact us for any concerns or special requirements.

## Usage Guide

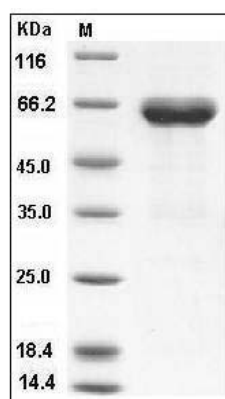
### Storage

Store it under sterile conditions at -20°C to -80°C. It is recommended that the protein be aliquoted for optimal storage. Avoid repeated freeze-thaw cycles.

### Reconstitution

Adding sterile water, prepare a stock solution of 0.25 mg/ml. Concentration is measured by UV-Vis.

## SDS-PAGE



Human Ephrin-B1 / EFNB1 Protein (His & Fc Tag)  
SDS-PAGE