

LBP antibody

Catalog Number: 112161

Product name

LBP antibody

Recommended Dilution:

WB: 1:500-1:5000

Specificity

Human, Mouse, Rat; other species not tested.

IP: 1:500-1:5000

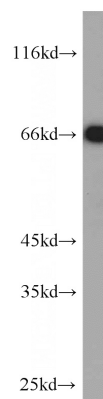
IHC: 1:20-1:200

Antibody description

LBP Rabbit Polyclonal antibody. Positive IP detected in mouse liver tissue. Positive WB detected in mouse liver tissue, A431 cells, A549 cells, HeLa cells, Jurkat cells, L02 cells, rat liver tissue. Positive IF detected in L02 cells, HepG2 cells. Positive IHC detected in human liver cancer tissue. Positive FC detected in HeLa cells. Observed molecular weight by Western-blot: 63-67 kDa

IF: 1:20-1:200

Validations



Preparation

This antibody was obtained by immunization of LBP recombinant protein (Accession Number: BC022256). Purification method: Antigen affinity purified.

mouse liver tissue were subjected to SDS PAGE followed by western blot with Catalog No:112161(LBP antibody) at dilution of 1:1000

Formulation

PBS with 0.1% sodium azide and 50% glycerol pH 7.3.

Storage

Store at -20°C. DO NOT ALIQUOT

Clonality

Polyclonal

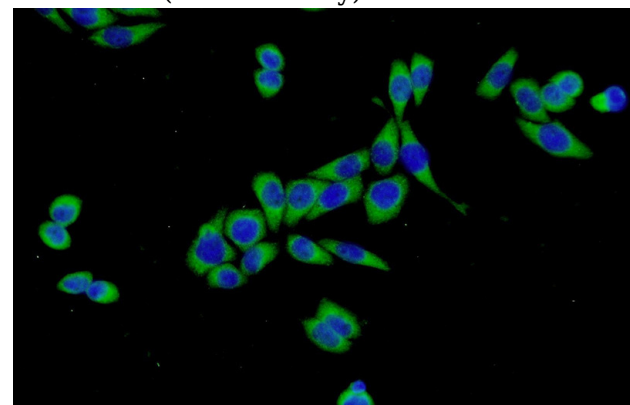
Ig Type

Rabbit IgG

Applications

ELISA, WB, IHC, FC, IP, IF

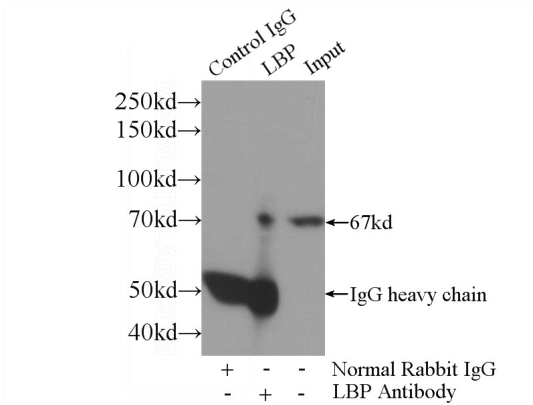
Dilutions



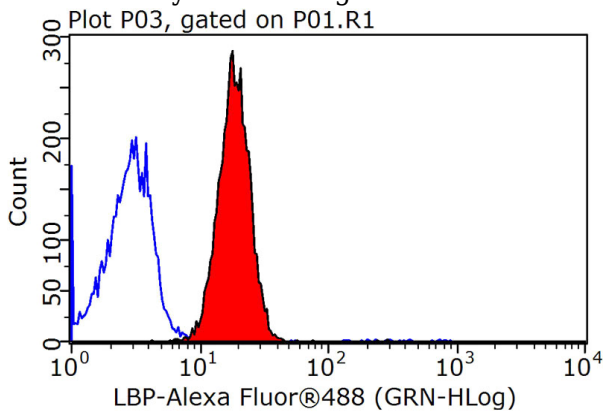
Immunofluorescent analysis of L02 cells using Catalog No:112161(LBP Antibody) at dilution of 1:50 and Alexa Fluor 488-conjugated AffiniPure Goat Anti-Rabbit IgG(H+L)

LBP antibody

Catalog Number: 112161

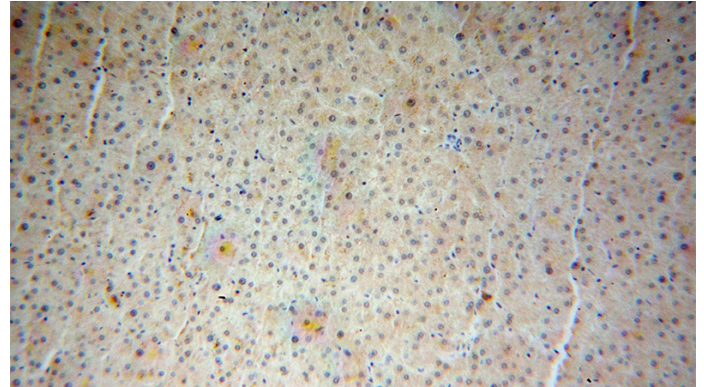


IP Result of anti-LBP (IP:Catalog No:112161, 4ug; Detection:Catalog No:112161 1:1000) with mouse liver tissue lysate 4000ug.

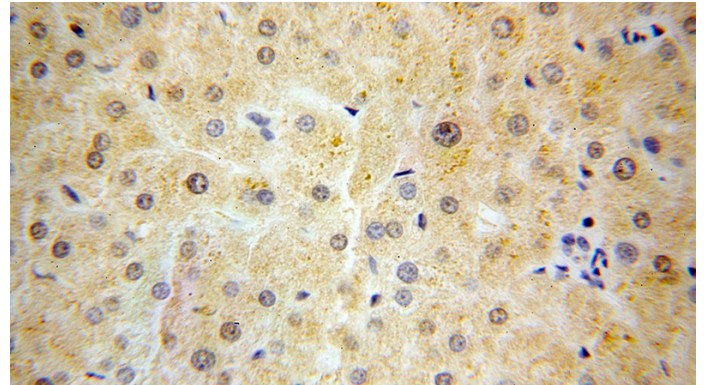


1X10⁶ HeLa cells were stained with 0.2ug LBP antibody (Catalog No:112161, red) and control antibody (blue). Fixed with 90% MeOH blocked with 3% BSA (30 min). Alexa Fluor 488-

conjugated AffiniPure Goat Anti-Rabbit IgG(H+L) with dilution 1:1500.



Immunohistochemical of paraffin-embedded human liver cancer using Catalog No:112161(LBP antibody) at dilution of 1:50 (under 10x lens)



Immunohistochemical of paraffin-embedded human liver cancer using Catalog No:112161(LBP antibody) at dilution of 1:50 (under 40x lens)