

CARM1 antibody



Catalog Number: 108861

Product name

CARM1 antibody

WB: 1:200-1:2000

IP: 1:200-1:2000

Specificity

Human, Mouse, Rat, Monkey; other species not tested.

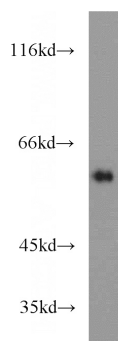
IHC: 1:20-1:200

IF: 1:20-1:200

Antibody description

CARM1 Rabbit Polyclonal antibody. Positive IP detected in NIH/3T3 cells. Positive WB detected in COS-7 cells, HeLa cells, MCF7 cells, NIH/3T3 cells, PC-3 cells. Positive IF detected in NIH/3T3 cells. Positive IHC detected in human breast cancer tissue. Observed molecular weight by Western-blot: 63-66 kDa, 55 kDa

Validations



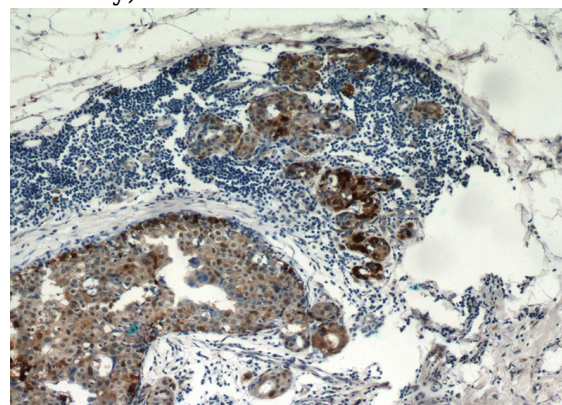
Preparation

This antibody was obtained by immunization of Peptide (Accession Number: NM_199141). Purification method: Antigen affinity purified.

COS-7 cells were subjected to SDS PAGE followed by western blot with Catalog No:108861(CARM1 antibody) at dilution of 1:500

Formulation

PBS with 0.02% sodium azide and 50% glycerol pH 7.3.



Storage

Store at -20°C. DO NOT ALIQUOT

Clonality

Polyclonal

Ig Type

Rabbit IgG

Immunohistochemical of paraffin-embedded human breast cancer using Catalog No:108861(CARM1 antibody) at dilution of 1:50 (under 10x lens)

Applications

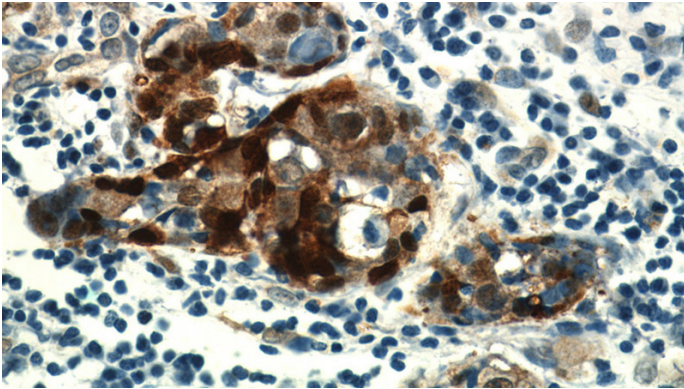
ELISA, IHC, WB, IF, IP

Dilutions

Recommended Dilution:

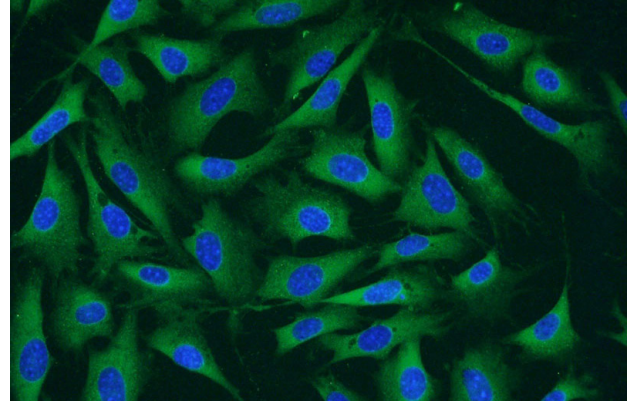
CARM1 antibody

Catalog Number: 108861



Immunohistochemical of paraffin-embedded human breast cancer using Catalog No:108861(CARM1 antibody) at dilution of 1:50

IP Result of anti-CARM1 (IP:Catalog No:108861, 4ug; Detection:Catalog No:108861 1:500) with NIH/3T3 cells lysate 2000ug.



Immunofluorescent analysis of NIH/3T3 cells using Catalog No:108861(CARM1 Antibody) at dilution of 1:50 and Alexa Fluor 488-conjugated AffiniPure Goat Anti-Rabbit IgG(H+L)

