

# Anti-NDEL1 Rabbit antibody



Catalog Number: 167861

## Product name

Anti-NDEL1 Rabbit antibody

## Specificity

Human, Mouse, Rat

## Antibody description

NDEL1 Rabbit monoclonal antibody

## Preparation

Antigen: A synthetic peptide of human NDEL1

## Formulation

50nM Tris-Glycine(pH 7.4), 0.15M NaCl,  
40%Glycerol, 0.01% sodium azide and 0.05% BSA

## Storage

Store at 4°C short term. Store at -20°C long term.  
Avoid freeze / thaw cycle.

## Clonality

Monoclonal

## Ig Type

Rabbit IgG

## Applications

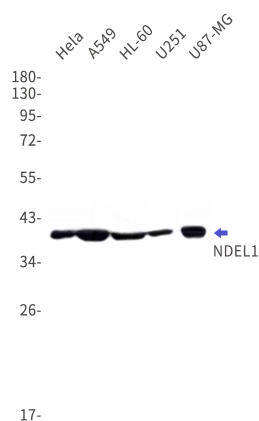
WB, IHC-P

## Dilutions

WB: 1/1000

IHC: 1/20

## Validations



Western blot detection of NDEL1 in HeLa,A549,HL-60,U251,U87-MG cell lysates using NDEL1 Rabbit mAb(1:1000 diluted).Predicted band size:38kDa.Observed band size:38kDa.