

Relatlimab reference antibody



Catalog Number: 176861

Product name

Relatlimab reference antibody

Specificity

Human LAG3 / CD223

Antibody description

Anti-LAG3 / CD223 Antibody (Relatlimab)

Preparation

Recombinant expression and purified from CHO cells.

Formulation

0.1 M Pro-Ac, 20 mM Arg, pH 5.0

Storage

-80°C for 2 years under sterile conditions; -20°C for 1 year under sterile conditions; Avoid repeated freeze-thaw cycles.

Clonality

Monoclonal

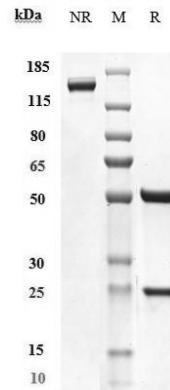
Ig Type

IgG4SP

Applications

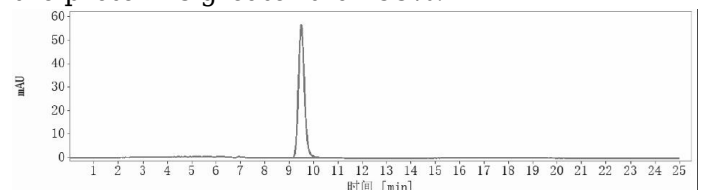
ELISA

Validations



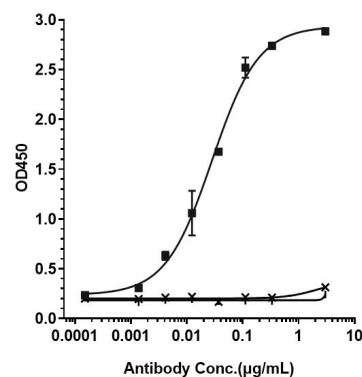
SDS-PAGE

Anti-LAG3 / CD223 Antibody (relatlimab) on SDS-PAGE under reducing (R) condition. The purity of the protein is greater than 95%.



SEC-HPLC

The purity of Anti-LAG3 / CD223 Antibody (relatlimab) is 100%, determined by SEC-HPLC.



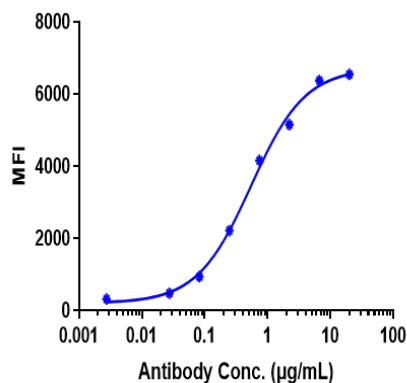
Bioactivity: ELISA

Immobilized human LAG3 His at 2 µg/mL can bind Anti-LAG3 / CD223 Antibody (relatlimab), EC50=0.02812 µg/mL.

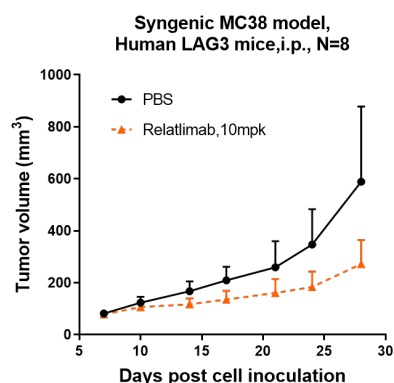
Relatlimab reference antibody



Catalog Number: 176861



EC50=0.5464 ug/mL.



Bioactivity: FACS

Human LAG3 CHO cells were stained with Anti-LAG3 / CD223 Antibody (relatlimab) and negative control protein respectively, washed and then followed by PE and analyzed with FACS,

Research in vivo

Relatlimab inhibited the tumor growth of MC38 on Human LAG3 mice. The result showed significant anti-tumor effects, with an tumor inhibition rate (TGI) of 53.8% at 10 mpk at D28.