

# Human KLK3 (His Tag) recombinant protein



Catalog Number: 500861

## General Information

### Gene Name Synonym

Gamma-seminoprotein; Kallikrein-3; P-30 antigen; Semenogelase

### Protein Construction

A DNA sequence encoding the human KLK3 (P07288) (Met 1-Pro 261) was fused with a polyhistidine tag at the C-terminus.

### Organism

Human

### Expression Host

Human Cells

## QC Testing

### Activity

Measured by its ability to cleave the colorimetric peptide substrate, Succinyl-Arg-Pro-Tyr-p-Nitroanilide(Suc-RPY-pNA). The specific activity is >100 pmoles/min/ $\mu$ g.

### Purity

> 95 % as determined by SDS-PAGE

### Endotoxin

< 1.0 EU per  $\mu$ g of the protein as determined by the LAL method

### Stability

Samples are stable for up to twelve months from date of receipt at -70°C

### Predicted N terminal

Ala 18

## Molecular Mass

The recombinant human KLK3 consists of 255 amino acids and has a predicted molecular mass of 28.3 kDa. In SDS-PAGE under reducing conditions, the apparent molecular mass of rh KLK3 is approximately 35 kDa.

## Formulation

Lyophilized from sterile PBS, pH 7.4

1. 5 % trehalose and mannitol are added as protectants before lyophilization.

2. Please contact us for any concerns or special requirements.

## Usage Guide

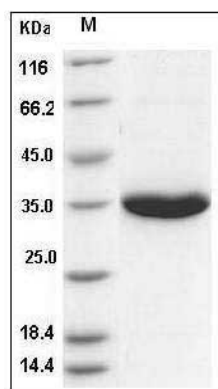
### Storage

Store it under sterile conditions at -20°C to -80°C. It is recommended that the protein be aliquoted for optimal storage. Avoid repeated freeze-thaw cycles.

### Reconstitution

Adding sterile water, prepare a stock solution of 0.25 mg/ml. Concentration is measured by UV-Vis.

### SDS-PAGE



Human KLK3 / PSA / Kallikrein-3 Protein (His Tag)  
SDS-PAGE