

Coproporphyrinogen oxidase antibody



Catalog Number: 109461

Product name

Coproporphyrinogen oxidase antibody

IP: 1:500-1:5000

IHC: 1:20-1:200

Specificity

Human, Mouse, Rat; other species not tested.

Antibody description

Coproporphyrinogen oxidase Rabbit Polyclonal antibody. Positive IP detected in HepG2 cells. Positive WB detected in K-562 cells, HepG2 cells, human liver tissue. Positive IHC detected in human liver tissue, human testis tissue. Observed molecular weight by Western-blot: 35 kDa

Preparation

This antibody was obtained by immunization of Coproporphyrinogen oxidase recombinant protein (Accession Number: NM_000097). Purification method: Antigen affinity purified.

Formulation

PBS with 0.02% sodium azide and 50% glycerol pH 7.3.

Storage

Store at -20°C. DO NOT ALIQUOT

Clonality

Polyclonal

Ig Type

Rabbit IgG

Applications

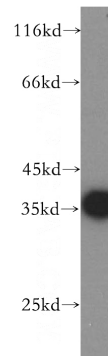
ELISA, WB, IHC, IP

Dilutions

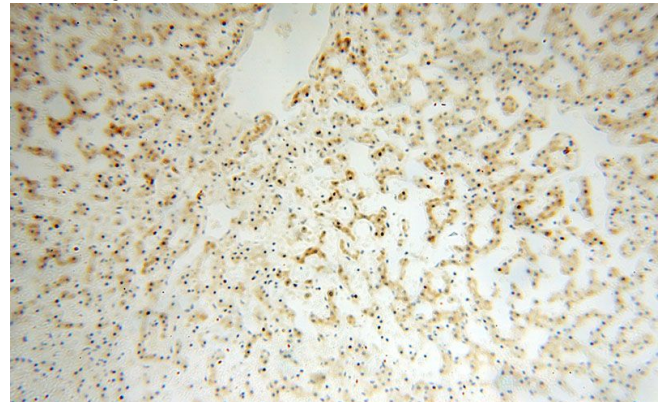
Recommended Dilution:

WB: 1:1000-1:10000

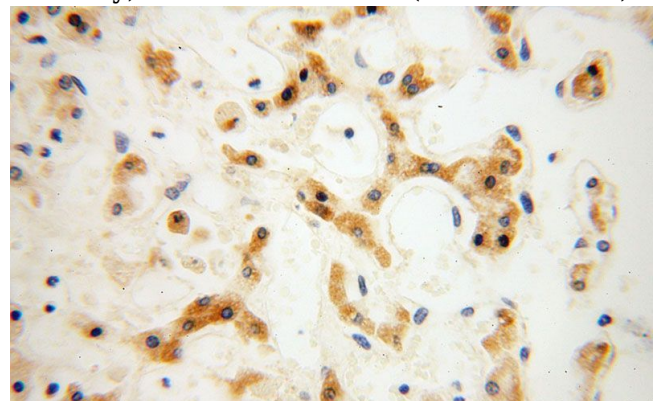
Validations



K-562 cells were subjected to SDS PAGE followed by western blot with Catalog No:109461(CPOX antibody) at dilution of 1:1000



Immunohistochemical of paraffin-embedded human liver using Catalog No:109461(CPOX antibody) at dilution of 1:100 (under 10x lens)



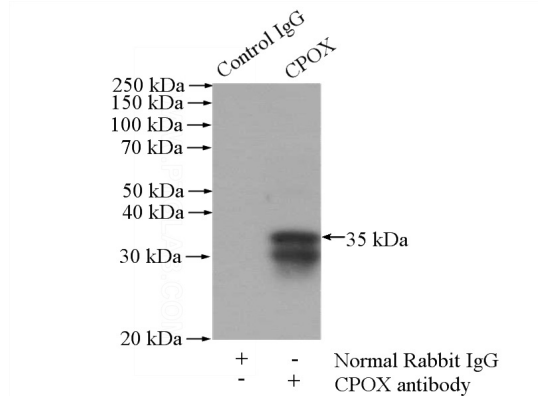
Immunohistochemical of paraffin-embedded human liver using Catalog No:109461(CPOX

Coproporphyrinogen oxidase antibody



Catalog Number: 109461

antibody) at dilution of 1:100 (under 40x lens)



IP Result of anti-CPOX (IP:Catalog No:109461, 4ug; Detection:Catalog No:109461 1:1000) with HepG2 cells lysate 1800ug.