

Anti-PLCG 2 Mouse antibody



Catalog Number: 168461

Product name

Anti-PLCG 2 Mouse antibody

WB: 1/500 - 1/2000

ICC: 1/200 - 1/1000

Specificity

Human

FC: 1/200 - 1/400

ELISA: 1/10000

Antibody description

PLCG 2 Mouse monoclonal antibody

Preparation

Antigen: Synthesized peptide of human PLCG2 (AA: phospho-Tyrosine 753 of human Phospholipase C γ 2(cERDINSLpYDVSRMYV)).

Formulation

Purified antibody in PBS with 0.05% sodium azide.

Storage

Store at 4°C short term. Store at -20°C long term. Avoid freeze / thaw cycle.

Clonality

Monoclonal

Ig Type

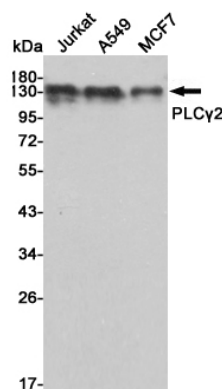
Mouse IgG2b

Applications

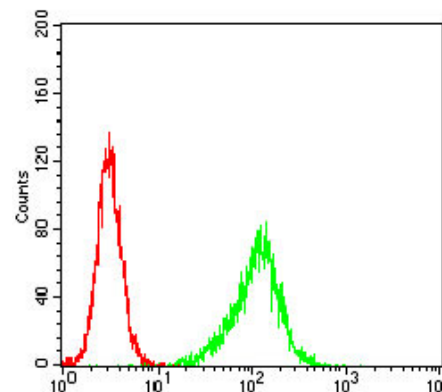
WB, ICC/IF, FC

Dilutions

Validations



Western blot analysis of extracts from Jurkat, A549 and MCF7 cell lysates using PLC γ 2 mouse mAb (1:1000 diluted). Predicted band size: 148 kDa. Observed band size: 148 kDa.



Flow cytometric analysis of HeLa cells using PLCG2 mouse mAb (green) and negative control (red).