

Anti-SLC9A3R2 antibody



Catalog Number: 176461

Product name

Anti-SLC9A3R2 antibody

Specificity

Human, Mouse, Rat

Antibody description

Rabbit polyclonal antibody to SLC9A3R2

Preparation

This antigen of this antibody was synthesized peptide derived from nherf-2 . at aa range: 20-100

Formulation

Liquid, Liquid in PBS containing 50% glycerol, 0.5% BSA and 0.02% sodium azide.

Storage

Store at +4°C after thawing. Aliquot store at -20°C or -80°C. Avoid repeated freeze / thaw cycles.

Clonality

Polyclonal

Ig Type

Rabbit IgG

Applications

WB

Dilutions

WB: 1:500-1:2000

Validations

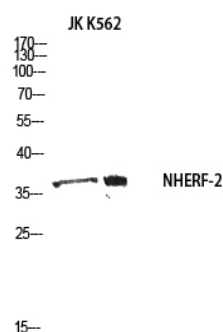


Fig1.; Western blot analysis of JK K562 using NHERF-2 antibody.. Secondary antibody [catalog#: HA1001) was diluted at 1:20000