

# RAB8B antibody

Catalog Number: 114461

## Product name

RAB8B antibody

IP: 1:500-1:5000

IHC: 1:20-1:200

## Specificity

Human, Mouse; other species not tested.

## Antibody description

RAB8B Rabbit Polyclonal antibody. Positive IHC detected in human lung cancer tissue, human testis tissue. Positive WB detected in fetal human brain tissue, human brain tissue. Positive IP detected in mouse brain tissue. Observed molecular weight by Western-blot: 24 kDa

## Preparation

This antibody was obtained by immunization of RAB8B recombinant protein (Accession Number: NM\_016530). Purification method: Antigen affinity purified.

## Formulation

PBS with 0.1% sodium azide and 50% glycerol pH 7.3.

## Storage

Store at -20°C. DO NOT ALIQUOT

## Clonality

Polyclonal

## Ig Type

Rabbit IgG

## Applications

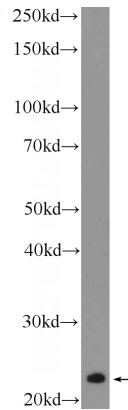
ELISA, IHC, WB, IP

## Dilutions

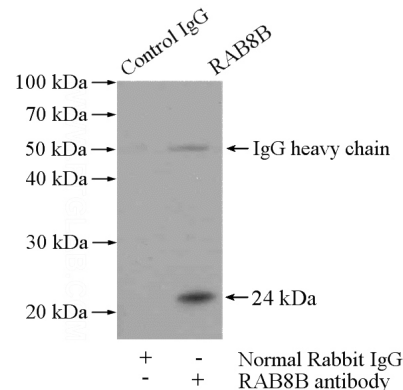
Recommended Dilution:

WB: 1:500-1:5000

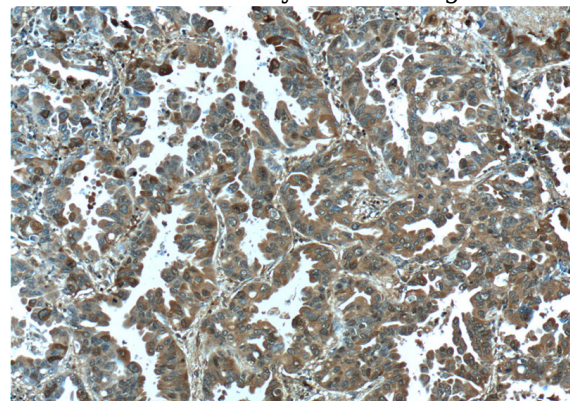
## Validations



fetal human brain tissue were subjected to SDS PAGE followed by western blot with Catalog No:114461(RAB8B Antibody) at dilution of 1:1000



IP Result of anti-RAB8B (IP:Catalog No:114461, 4ug; Detection:Catalog No:114461 1:1000) with mouse brain tissue lysate 4000ug.



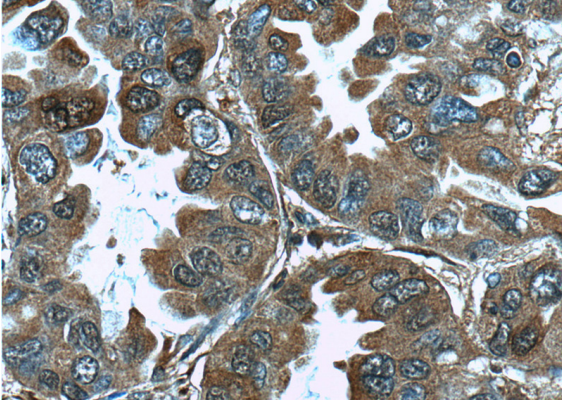
Immunohistochemistry of paraffin-embedded human lung cancer tissue slide using Catalog

# RAB8B antibody

Catalog Number: 114461

---

No:114461(RAB8B Antibody) at dilution of 1:50  
(under 10x lens)



Immunohistochemistry of paraffin-embedded  
human lung cancer tissue slide using Catalog  
No:114461(RAB8B Antibody) at dilution of 1:50  
(under 40x lens)