

## General Information

### Protein Construction

A DNA sequence encoding human insulin B chain (2LGB\_B)(Phe1-Lys29) and human insulin A chain (2KXK\_A)(Gly1-Asn21) was expressed with a linker AAK.

### Organism

Human

### Expression Host

Yeast

## QC Testing

### Activity

Measured in a serum-free cell proliferation assay using MCF-7 human breast cancer cells. The ED<sub>50</sub> for this effect is typically 0.2-1 µg/mL.

### Purity

> 95 % as determined by SDS-PAGE

### Endotoxin

Please contact us for more information.

### Stability

Samples are stable for up to twelve months from date of receipt at -70°C

### Predicted N terminal

Phe

### Molecular Mass

The recombinant human Insulin consists of 53 amino acids and predicts a molecular mass of 6 KDa. It migrates as an approximately 6 KDa band in SDS-PAGE under reducing conditions.

### Formulation

Lyophilized from sterile PBS, pH 7.4.

1. 5 % trehalose and mannitol are added as protectants before lyophilization.
2. Please contact us for any concerns or special requirements.

## Usage Guide

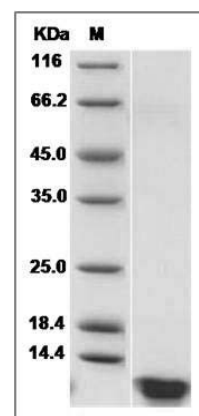
### Storage

Store it under sterile conditions at -20°C to -80°C. It is recommended that the protein be aliquoted for optimal storage. Avoid repeated freeze-thaw cycles.

### Reconstitution

Adding sterile water, prepare a stock solution of 0.25 mg/ml. Concentration is measured by UV-Vis.

### SDS-PAGE



Human Insulin / INS Protein SDS-PAGE