

ANKLE1 antibody



Catalog Number: 108061

Product name

ANKLE1 antibody

Specificity

Human; other species not tested.

Antibody description

ANKLE1 Rabbit Polyclonal antibody. Positive IHC detected in human breast cancer tissue. Positive WB detected in Hela cells, K-562 cells. Observed molecular weight by Western-blot: 67 kDa

Preparation

This antibody was obtained by immunization of ANKLE1 recombinant protein (Accession Number: NM_001278443). Purification method: Antigen Affinity purified.

Formulation

PBS with 0.02% sodium azide and 50% glycerol pH 7.3.

Storage

Store at -20°C. DO NOT ALIQUOT

Clonality

Polyclonal

Ig Type

Rabbit IgG

Applications

ELISA, WB, IHC

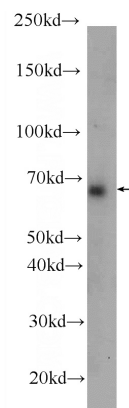
Dilutions

Recommended Dilution:

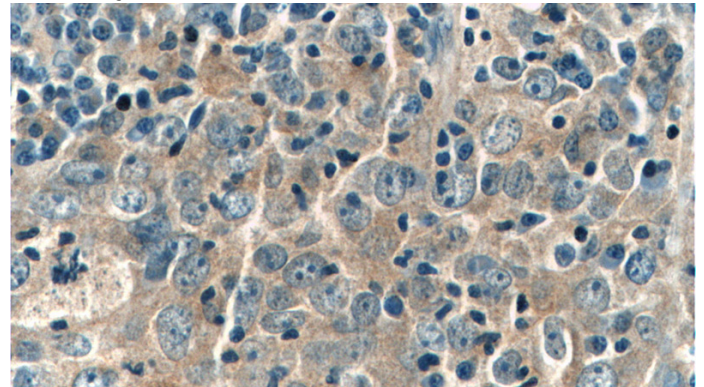
WB: 1:200-1:2000

IHC: 1:20-1:200

Validations



Hela cells were subjected to SDS PAGE followed by western blot with Catalog No:108061(ANKLE1 Antibody) at dilution of 1:500



Immunohistochemistry of paraffin-embedded human breast cancer tissue slide using Catalog No:108061(ANKLE1 Antibody) at dilution of 1:50 (under 40x lens)